



PythonPipeTM

spoolable composite pipe

Available Products & Services



PythonPipe GF – Glass Fiber Reinforced¹

Size	Operational Temperature (°F)	Nominal Pressure (psi)	Outside Diameter (in)	Inside Diameter (in)	Max. Length Per Reel (ft)	Min. Bend Radius (ft)	Reel Size (ft)	Max. Reel Weight (lb)
4"	150°F/180°F	750	4.71	3.83	1,990	7.8	14.5	10,396
		1,500	4.9	3.83	1,910	8.2	14.5	11,639
6"	150°F/180°F	750	6.87	5.6	870/1400	11.4	14.5/16.3	9,550/15,500
		1,500	7.2	5.6	460/1,040	12.0	16.3/17.3	9,295/15,386
8"	150°F/180°F	750	9.31	7.63	365/800	15.5	16.3/17.3	9,342/15,232
8"	150°F	1500	9.74	7.63	335/700	16.2	16.3/17.3	11,538

¹Reel weights can vary up to 20%

PythonPipe SW – Steel Wire Tape Reinforced¹

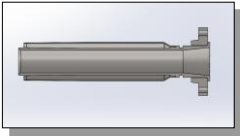
Size	Operational Temperature (°F)	Nominal Pressure (psi)	Outside Diameter (in)	Inside Diameter (in)	Max. Length Per Reel (ft)	Min. Bend Radius (ft)	Reel Size (ft)	Max. Reel Weight (lb)
4"	150°F/180°F	2,250	4.84	3.83	1,700	8.1	14.5	8,595
		3,000	4.84	3.83	1,700	8.1	14.5	8,595
6"	150°F/180°F	1,500	6.94	5.6	835	11.6	14.5	10,813
		2,250	7.26	5.6	805	12.1	14.5	13,520
		3,000	7.26	5.6	805	12.1	14.5	13,520
8"	180°F	1500	9.3	7.63	390	7.2	16.3	10,882
		3000	9.6	7.63	360	7.2	16.3	12,807

¹Reel weights can vary up to 20%

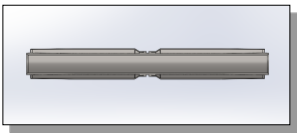
FITTINGS

No welding required or makeup needed for flanges or threaded joints

- Coupling options include flanges, weld ends, and threaded ends - all can be made with standard or custom pipe sizes
- End fittings connect to common oilfield infrastructure
- Available in carbon steel, FBE coated, or stainless steel (316 or 2205 duplex), Inconel 625



FLANGED FITTING



SPLICE FITTING

SERVICES

A range of services customized to your requirements:

- Offloading and Loading Oversight
- Pipe Deployment and Assembly Services or Supervision
- Hydrotest Oversight
- Repairs and Post Installation Inspection Services
- Equipment Rental
- Manpower Certification

TOTEX

Not sure if flexible pipelines fit your project? Our team can provide a free TOTEX study to demonstrate how early engagement and flexible solutions reduce installation costs, minimize maintenance, and accelerate deployment for better financial performance.

PROVEN PERFORMANCE BEYOND INDUSTRY STANDARDS

- **Proven Cyclic Endurance:** PythonPipe exceeds API requirements with advanced cyclic pressure testing. It has been validated through more than 25 million pressure cycles.
- **Lab-Scale Chemical and Fluid Compatibility:** Full-scale pipes and fittings undergo rigorous laboratory testing to simulate chemical aging. PythonPipe maintains strength and integrity even after exposure to harsh fluids and environments, including aromatic and cycloalkane hydrocarbons.
- **Advanced Coextruded Liner:** Engineered for exceptional permeation control and chemical resistance, this feature extends service life and enhances protection in aggressive applications
- **Weather-Resistant Design:** PythonPipe maintains structural integrity even with water ingress. Its reinforcement layers are encased in a polymer resin that shields them from water degradation. Glass fiber performance remains unaffected, and strength retention is consistent, maintaining strength over its full-service life.

PythonPipe™

spoolable composite pipe

Our products are designed, qualified, and manufactured in accordance with API RP 15S, 'Recommended Practice for the Qualification of Spoolable Reinforced Plastic Line Pipe,' at our API Q1 certified and API 15S licensed facility (API License Number: 15S-0024)

UP TO
8"
Diameter

**TIEBOND
LAYER**

**HDPE BASE
PIPE LAYER
FOR HIGH-
TEMPERATURE
STRENGTH (Up
to 180°F)**

**ABRASION-
RESISTANT
HDPE OUTER
JACKET**

ADDITIONAL PROPRIETARY PERMEATION RESISTANT LINER OPTIONS

Nylon

- Adds gas permeating resistance vs HDPE
- Improved resistance to paraffin deposition

PPS

- Highest permeation resistance
- Best for extremely corrosive environments

PROPRIETARY REINFORCEMENT LAYER OPTIONS

Glass fiber

- Optimal weight to pressure resistance
- For applications **up to 1,500 psi**
- Good for **sour service** and **cyclic applications**

Steel wire

For highest pressure resistance—**up to 3,000 psi**



PythonPipe™ spoolable composite pipe

Our Value Proposition



Corrosion & Chemical Resistance

Unmatched Resistance (co-extrusion)



Early Production

Over 60% faster Installation and tie-in



CAPEX

Up to 4X savings in installation cost to steel



OPEX

Maintenance cost (cleaning and coating) reduced up to 80%



Decarbonization

Reduce cradle to grave CO₂ impact by up to 75%

Where we play

Oil & Gas

Corrosive environments will always go hand in hand. As strong as steel, but with greater durability, PythonPipe will outlast and outperform conventional pipelines

Water Transport

Produced, fresh-water transport or disposal present erosion and corrosion issues that steel pipes cannot address without extensive maintenance and treatment. PythonPipe offers a cost-competitive alternative

Mining

Slurries transported in mining often face the same challenges as high pressures, temperatures, and corrosion/erosion of hydrocarbon transport. Low abrasion and no pressure derating of the pipe allows for high flow at optimal diameters

New Energies

- ✓ CO₂ Transport
- ✓ Geothermal
- ✓ Hydrogen(H₂)
- ✓ Other : Rehabilitation(Pull-Through old and aging assets)

Discover how PythonPipe spoolable composite pipe can reduce your capital and operations expenditures, reduce production downtime and improve your profits for the entire life cycle of the installation. Learn what to look for to determine which pipe configuration is right for your application

Request more information or connect with a Baker Hughes representative at:

Bakerhughes.com/onshore-composite-pipe

