

# Hybrid edge-cloud automated advisory system for well construction ensures well delivery while improving drilling performances

## CHALLENGES

- Remote location offshore Tiera del Fuego
- Criticality to deliver full three well campaign with well-to-well consistency and at or below planned budget
- Meet global energy demand and enable greater drilling efficiency, consistency, and results

## SOLUTION

- TotalEnergies deployed Baker Hughes' i-Trak™ automated advisory and i-Trak™ automated directional drilling services on the Fénix project, offshore Argentina.
- Also used, is Baker Hughes' Corva™ to visualize and analyze the performance improvements being achieved with comprehensive KPI analytics, visualizations and detailed reporting.

## RESULTS

- **15 days** saved across **3** development wells
- The Fénix 6h 8h 17-1/2" is the most successful to-date, further increasing on-bottom ROP by **+41%** and further reducing W2W time by **25%**
- ILT reduction driving down well cost
- Improved ROP: Achieved an impressive **+84% increase** in on-bottom rate of penetration in the 12-1/4" sections from well #1 to well #3
- Reduced Weight-to-Weight Time (W2W): Enhanced visibility of hole conditions led to a **-36% reduction** in W2W times on the 12-1/4" sections
- Increasing automated footage: Executing a careful transition from manual directional drilling to automated. On the third well, the 17-1/2" and 12-1/4" sections had **90%+** of the footage drilled automatically

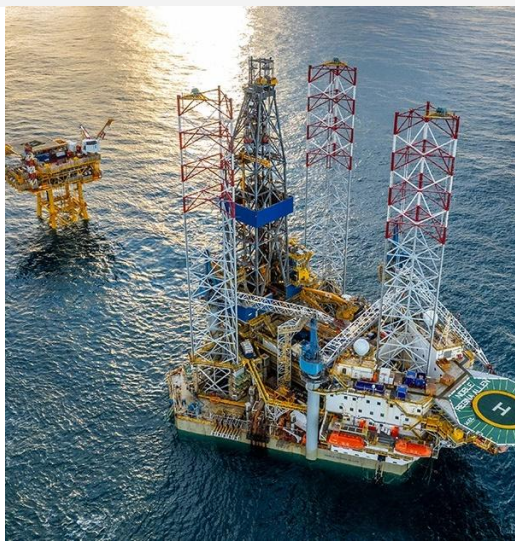
## VIDEO



Customer testimonial

[bakerhughes.com](https://bakerhughes.com)

Copyright 2025 Baker Hughes Company. All rights reserved. 85944



**Baker Hughes** 