

# Boosted Gassep gas separator reduced NPT, extended run life to 490 days, increasing production by 25% in high gas environment

## CHALLENGES

- Enhancing internal recirculation flow, optimizing gas ejection and ensuring superior gas-liquid separation even under high GVF conditions (up to 91%)
- Maintaining drawdown pressures close to 400 psi in line with customer expectations
- Managed variable gas/liquid ratio (GLR) from 600 to over 1,400 scf/STB, under operating conditions

## SOLUTION

- Baker Hughes recommended the Boosted Gassep gas separator to:
  - Create a differentiated solution to improve separation efficiency and minimize gas loading at the pump intake
  - Increase recirculation flow through the vent, carrying more gas out of the system
  - Maintain the motor temperature close to 250° F

## RESULTS

- Increased production by 25%, to more than 70,000 bbl over a 17-month period
- Mitigated gas locking and interference, significantly reducing non-productive time (NPT)
- Extended run life from typical 365 days to 490 days in a high GVF environment

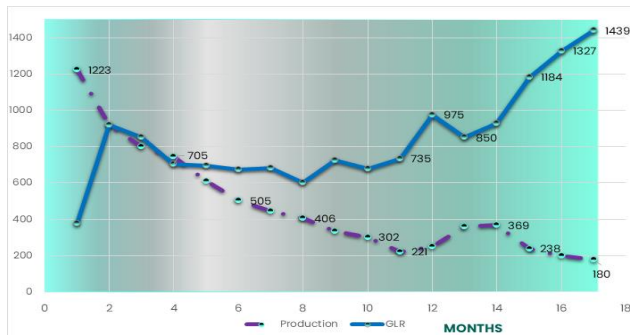


Chart shows GLR and production

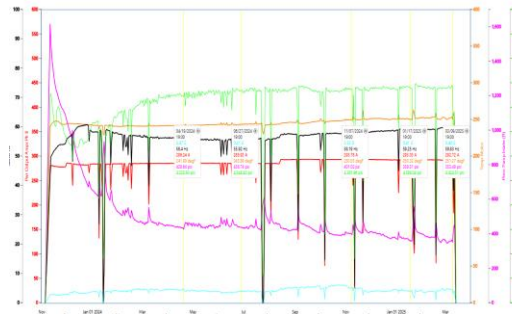


Chart shows performance of the ESP