

# 2" Flowgrid™ Slam Shut 250

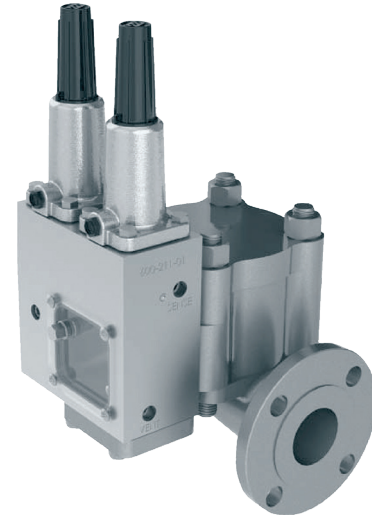
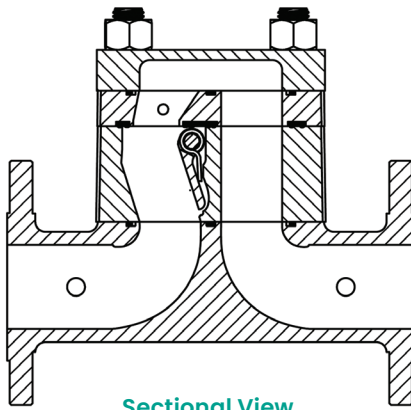
NPT CL 300 | CL 150 RF, CL 300 RF

The **Mooney™** Slam Shut 250 is a unique pneumatically actuated device that automatically provides downstream pressure protection. By separating the pneumatic controller and mechanical latching mechanism, shutoff is guaranteed to occur only when designated set points are reached. The patent pending design prevents disruptive and costly "accidental shutoffs". Positive shutoff is achieved instantly through the snap acting mechanism, and reset can be completed with common tools.

## Specifications

Size	2"
Body Style	Flowgrid 250 Single Port
End Connections	2" NPT CL 300, 2" CL 150 RF Flange, 2" CL 300
Temperature	Working -20°F to 150°F (-29°C to 65°C)
Maximum Inlet Pressure	250 psig (17 bar)
Flow Direction	Uni-Directional
Body Taps	Four 1/4" - 18 NPT (one inlet, one center port <sup>1</sup> , one loading and one downstream)

1. Center port - between flapper valve and regulator.



Flowgrid Regulator with Integral Shutoff Valve,  
Series 50D Dual Function Controller.

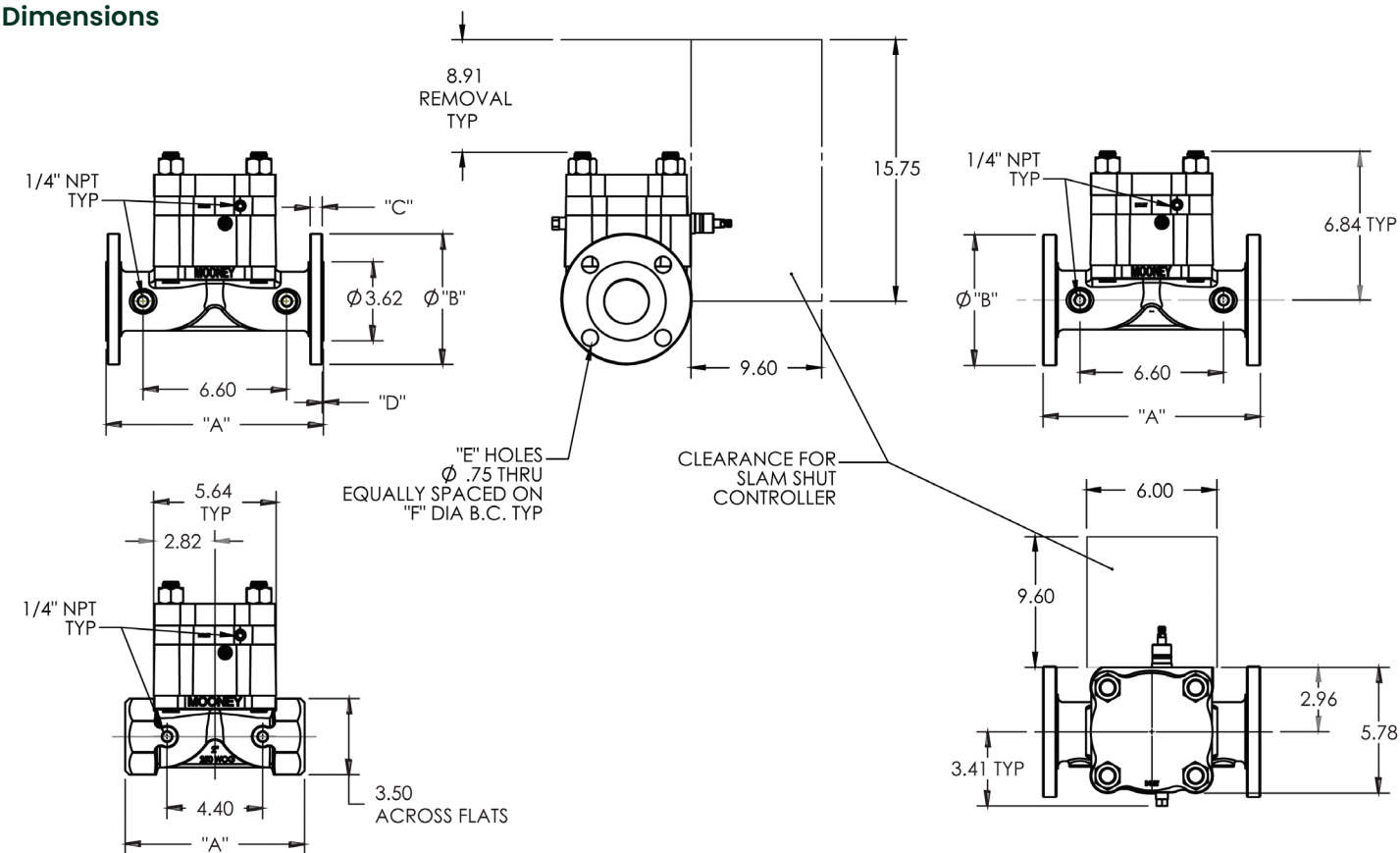
## Materials of Construction

Body	Ductile Iron ASTM A 395
Cap	ASTM A 516 Carbon Steel
Flapper and Shaft	17-4 Ph Stainless Steel
O-Ring and Seals	Nitrile, Optional Viton
Studs and Nuts	ASTM A 193 GR B-7 ASTM A 194 GR 2H or Equal
Springs	ASTM A 313-03 17-17 SS
Bushings	Acetal

## Stock Numbers

Slam Shut 250	Stock Number	Weight
NPT CL 300	SG-82	49 lbs.
150# Flange	SG-83	59 lbs.
300# Flange	SG-84	59 lbs.

Dimensions



Flange Dimensions

Flange Class	A	B	C	D	E	F
Class 150	10.00	6.00	.62	.06	4	4.75
Class 300	10.00	6.00	.56	-	4	4.75
NPT/SWE	8.25	-	-	-	-	-

Flow Coefficients and Constants<sup>1</sup>

Mooney Slam Shut 250		
C <sub>v</sub>	C <sub>1</sub>	C <sub>g</sub>
55	35	1700

1. Preliminary Data.