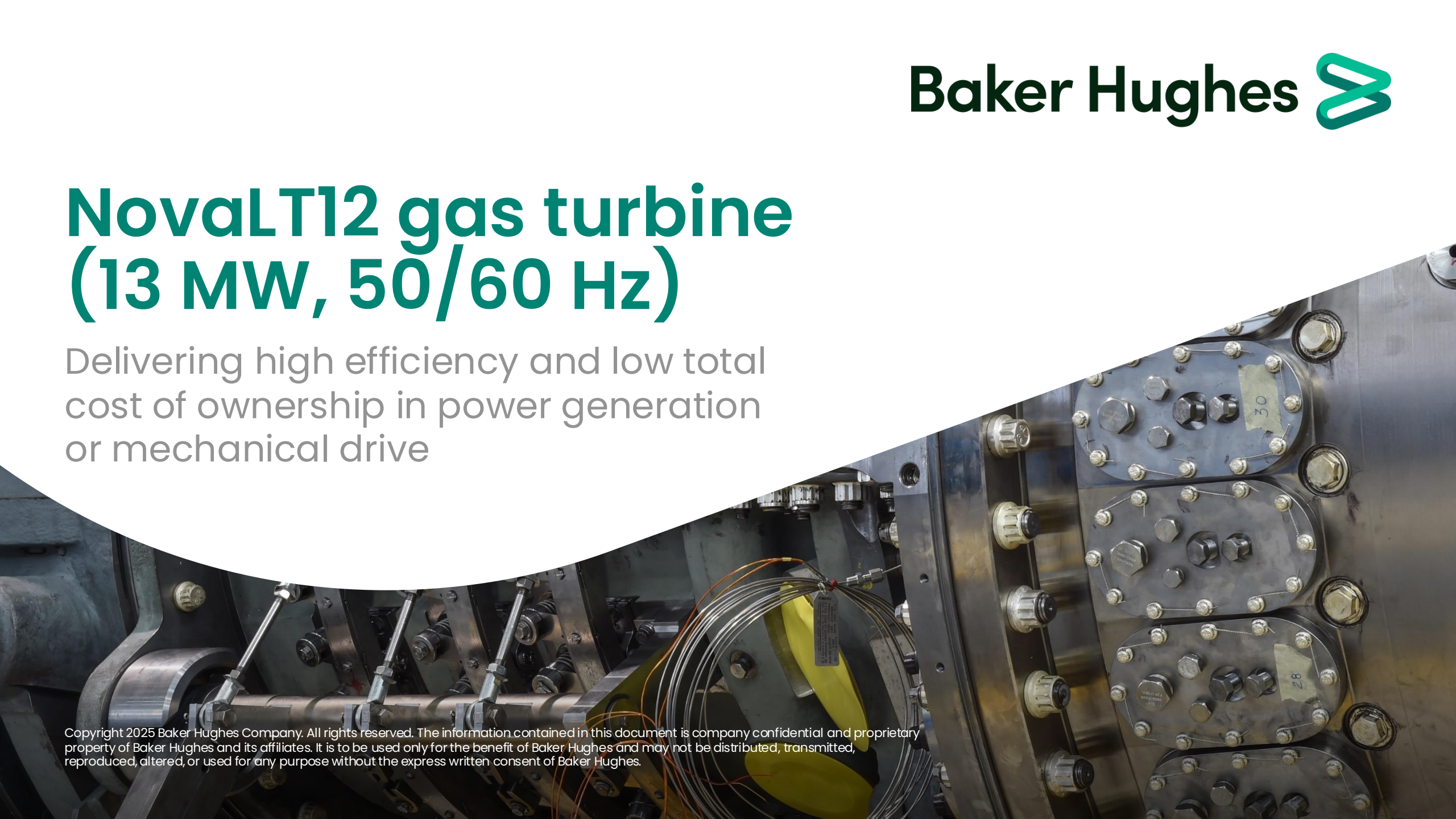


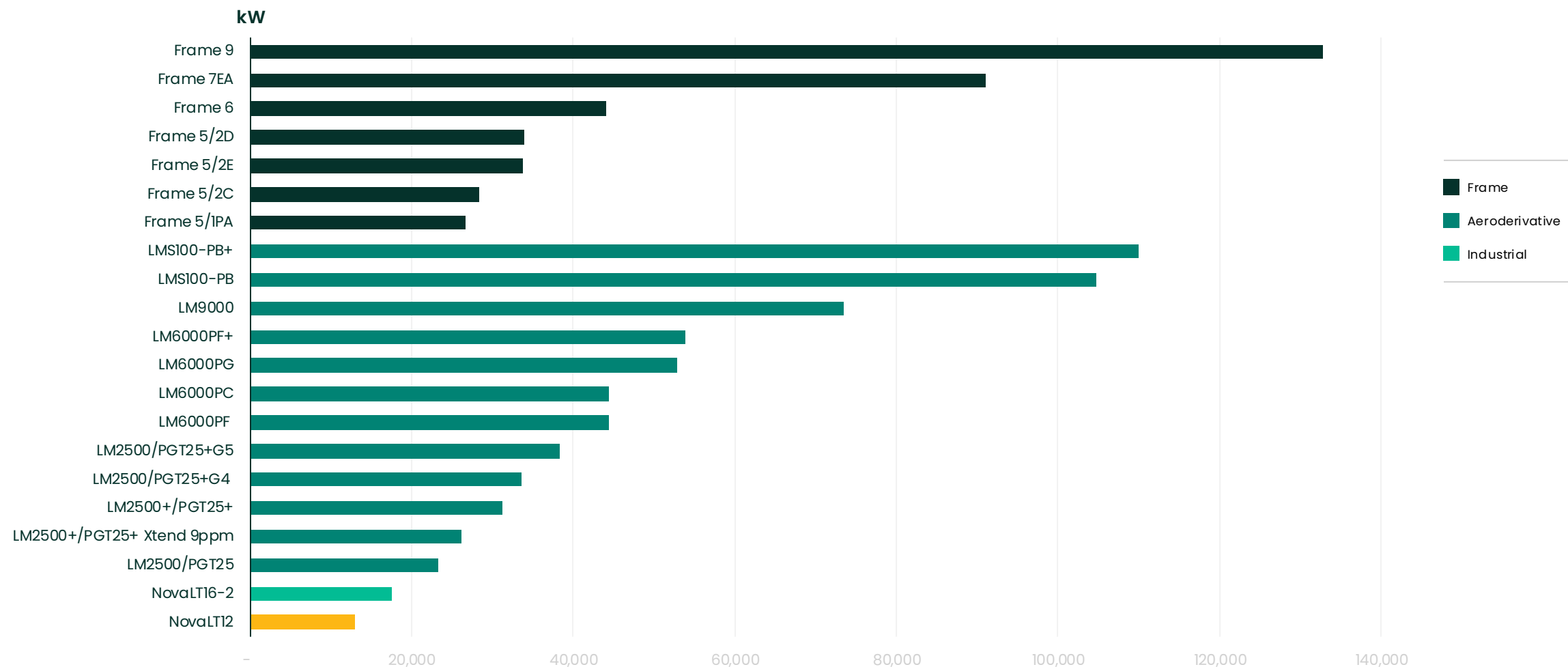
# NovaLT12 gas turbine (13 MW, 50/60 Hz)

Delivering high efficiency and low total cost of ownership in power generation or mechanical drive



Copyright 2025 Baker Hughes Company. All rights reserved. The information contained in this document is company confidential and proprietary property of Baker Hughes and its affiliates. It is to be used only for the benefit of Baker Hughes and may not be distributed, transmitted, reproduced, altered, or used for any purpose without the express written consent of Baker Hughes.

# Industry leader in gas turbine technology



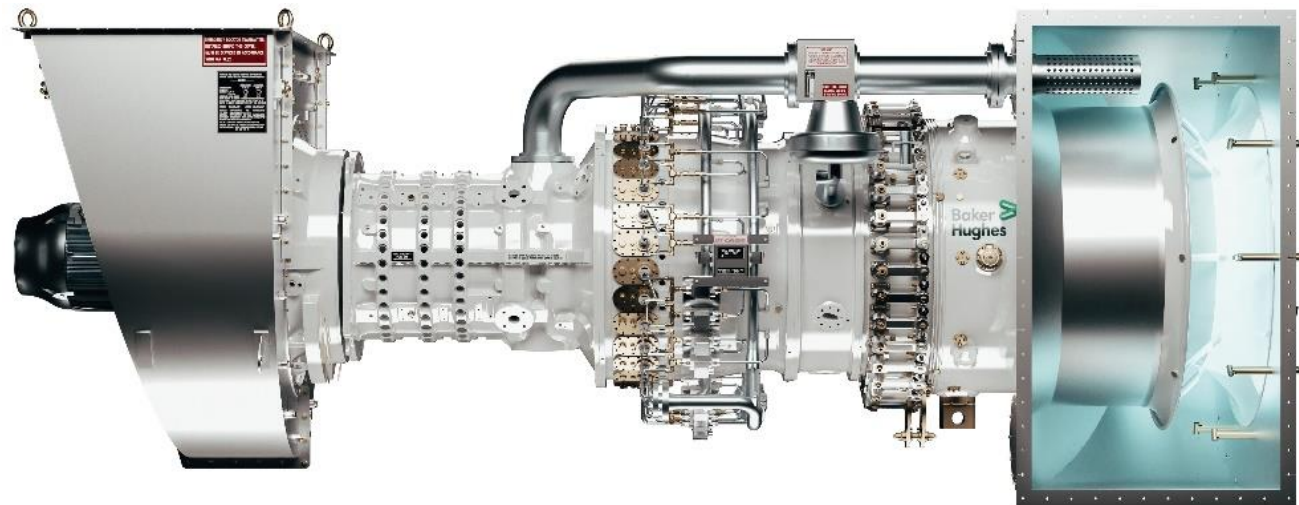
# NovaLT12

Maximum availability and lowest total cost

NovaLT™12 combines innovation with the best technology of our gas turbine experience with more than 900 units installed and ~80 millions fleet hours.

Designed to minimize environmental impact, the combustion system is capable of reducing CO<sub>2</sub> and NO<sub>x</sub> emissions down to 15 ppm—and single-digit NO<sub>x</sub> emissions are available on request.

The engine architecture is equipped with variable nozzle guide vanes, which eliminates bleeding and enables the highest efficiency at part load, reducing CO<sub>2</sub> footprint.

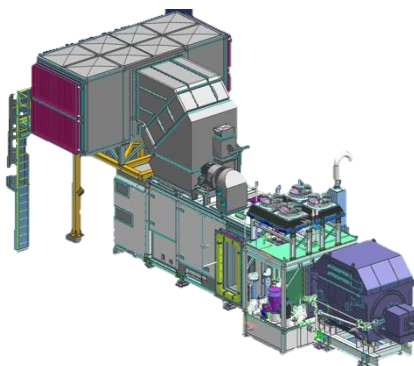


## Key features

- 36.8% efficiency in mechanical drive; up to 84% thermal efficiency in combined heat and power
- Flexible operation to 50% of rated speed; ideal in mechanical drive —can start with fully pressurized compressor
- 35,000 hours maintenance interval drives lower costs—automapping eliminates seasonal DLN tuning and intermediate boroscopic inspections

# Package

## Power generation



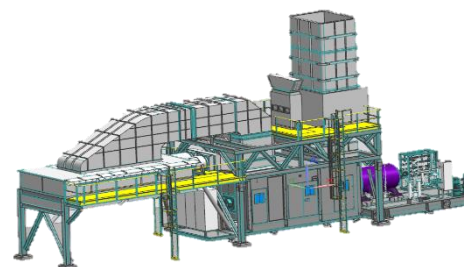
### Main skids

- Gas turbine and main auxiliary systems
- Lube oil system
- Electric generator
- Total footprint: 15.7 x 2.5 m

### Upper deck

- Filter house, ventilation system and ducting above gas turbine skid
- Mineral oil cooler and oil mist separator on lube oil skid
- Negative-pressure ventilation: 1 x 100% fan

## Mechanical drive



### Main skids

- Gas turbine and main auxiliary systems
- Centrifugal compressor and seal gas panel
  - Total footprint: 18.2 x 3.15 m

### Upper deck

- Filter house, ventilation system and ducting
- Positive pressure ventilation: 2 x 100% AC motor-driven axial fans (1 main + 1 standby)

## Applications

- Onshore and offshore
- Pipeline, gas storage
- Industrial, and combined heat and power
- Referenced in
  - Extreme environments (arctic and desert)
  - Pipeline, industrial power generation, gas compression

## Fast installation and commissioning

- Single-lift package
- Train loop-checks and flushing performed at factory (with UCS job software)
- Shipping standard
- Multi-skills on site

# Datasheet

## Power generation

Power	MWe	12.5
Efficiency	%	35.3
NOx	ppm	15*
Exhaust	°C	496
Speed	RPM	8,900

## Package—power gen

LxWxH	m	14.3x2.5x6.4
Weight	tons	113

## Mechanical drive

Power	MWe	13
Efficiency	%	36.8
NOx	ppm	15*
Exhaust	°C	496
Speed	RPM	8,900

## Package—mech drive

LxWxH	m	7.2x2.5x3.5
Weight	tons	37.9

- Single annular combustor technology
- Dry low emission combustion system, capable of <15 ppm NOX at 15% O<sub>2</sub>, from 50% to 100% load (9ppm NOx available)
- Max availability: engine swap in less than 3 days, no intermediate boroscope inspections
- No seasonal DLN tuning: initial DLN tuning during commissioning (90% shorter than traditional system) and on a four-year basis thereafter (via remote connection)
- No need for gas composition analysis system
- 44–57 MWI fuel flexibility, experience recorded outside these limits
- Up to 100% vol H<sub>2</sub> capability, tested on combustion chamber

## Main inspections

HGP	hrs	35,000
Major insp.	hrs	70,000

\* 9ppm upon request

ISO conditions with natural gas fuel, ambient temperature 15°C, no inlet or exhaust losses, sea level, 60% relative humidity.  
Mechanical Package dimensions driven equipment excluded.