

Welcome to System 1 and Decision Support

Version 24.2 [Nov 2024]

Welcome

Bently Nevada is pleased to present System 1 and System 1 Decision Support (Figure 1-1) version 24.2, with new capabilities.

Users upgrading to version 24.2 will benefit from the many capability enhancements to effective outcomes, which are summarized below.

Bently Nevada remains focused on delivering the world's premier plant-wide machinery management software through bi-annual product releases.

For a detailed overview of System 1, please visit the [website](#).

S1 System 1 24.2 Features

System 1

Configuration Enhancements

- Search System 1 Hierarchy
- Route Report Enhancements

Display Enhancements

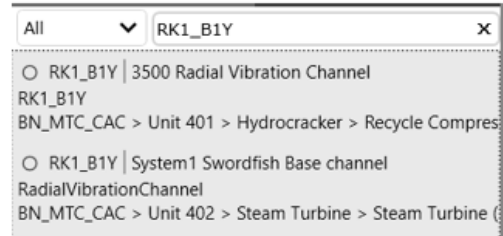
- Partial Waveform Analysis

Replication Enhancements

- Replication Extensibility
 - Adding Asset and Mapping
 - Adding Ranger Pro device
- Support gMSA account for S1 Replication and DS services

Server Security Enhancements

- Support Granular Rights



Actions	Administrator	Advanced	Basic
Configuration			
Configure License	<input type="checkbox"/>	<input type="checkbox"/>	<input type="checkbox"/>
Manage Asset/Device Configuration	<input type="checkbox"/>	<input type="checkbox"/>	<input type="checkbox"/>
Manage OPC UA Certificate	<input type="checkbox"/>	<input type="checkbox"/>	<input type="checkbox"/>
Manage Setpoints	<input type="checkbox"/>	<input type="checkbox"/>	<input type="checkbox"/>
Manage Templates	<input type="checkbox"/>	<input type="checkbox"/>	<input type="checkbox"/>
Override Configuration	<input type="checkbox"/>	<input type="checkbox"/>	<input type="checkbox"/>
Synchronize Device	<input type="checkbox"/>	<input type="checkbox"/>	<input type="checkbox"/>
Database Management			
Backup/Archive Database	<input type="checkbox"/>	<input type="checkbox"/>	<input type="checkbox"/>
Enable/Disable Online Data Collection	<input type="checkbox"/>	<input type="checkbox"/>	<input type="checkbox"/>
Manage Database Settings	<input type="checkbox"/>	<input type="checkbox"/>	<input type="checkbox"/>
Manage Replication	<input type="checkbox"/>	<input type="checkbox"/>	<input type="checkbox"/>
Rebuild Database	<input type="checkbox"/>	<input type="checkbox"/>	<input type="checkbox"/>
Display Administration			
Delete Data	<input type="checkbox"/>	<input type="checkbox"/>	<input type="checkbox"/>
Delete IPMS	<input type="checkbox"/>	<input type="checkbox"/>	<input type="checkbox"/>
Delete Notes	<input type="checkbox"/>	<input type="checkbox"/>	<input type="checkbox"/>
Delete Plot Record	<input type="checkbox"/>	<input type="checkbox"/>	<input type="checkbox"/>
Delete Plot Set	<input type="checkbox"/>	<input type="checkbox"/>	<input type="checkbox"/>
Delete Reviews	<input type="checkbox"/>	<input type="checkbox"/>	<input type="checkbox"/>
ESB Notes	<input type="checkbox"/>	<input type="checkbox"/>	<input type="checkbox"/>
ESB Plot Set	<input type="checkbox"/>	<input type="checkbox"/>	<input type="checkbox"/>
ESB Reviews	<input type="checkbox"/>	<input type="checkbox"/>	<input type="checkbox"/>
ESB/Online Reference Data Set	<input type="checkbox"/>	<input type="checkbox"/>	<input type="checkbox"/>
Manage Notification	<input type="checkbox"/>	<input type="checkbox"/>	<input type="checkbox"/>

Edge Devices Monitoring

Orbit DCM *

- Support Longtime Waveform
- Speed Input enhancement 30Khz
- Editable High-Frequency Corner Frequency for Async measurements
- Magnetic Pick-up Configuration for Speed Channel

* Refer section 5 of What's New

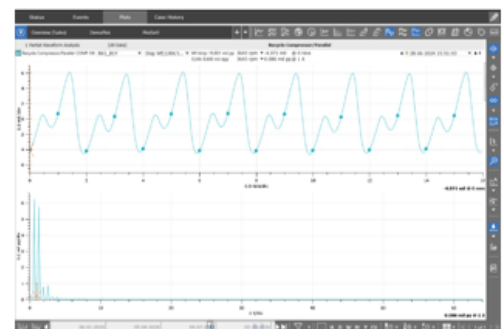


Figure 1-1 System 1 v24.2 Features

Decision Support 24.2 Features

Improved Productivity

Connectivity

- Heartbeat between DSS and System 1 Database

Ease of Deployment

- Support Smart Copy/Paste across Decision Support Servers
- Rule Upgrade Suppression Support

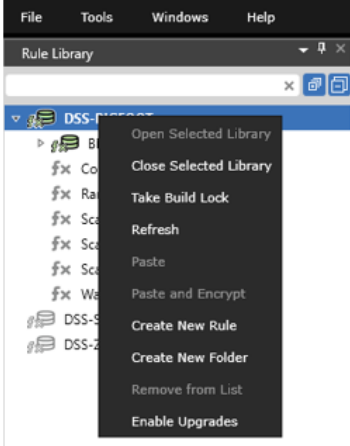


Figure 1-2 Decision Support 24.2 Features

Thank you,



Jeff Sipek, Product Manager

On behalf of your System 1 and DS Leadership and Development Teams

CONTENTS

- 1. SYSTEM 1 V24.2 FEATURE OVERVIEW6**
- 2. DECISION SUPPORT V24.2 FEATURE OVERVIEW8**
 - 2.1 Decision support is now available to download..... 8
 - 2.2 Decision Support Analytics Support..... 8
- 3. VERSION SUPPORT & OPERATING SYSTEM COMPATIBILITY9**
 - 3.1 System 1..... 9
 - 3.2 Decision Support.....11
- 4. SYSTEM 1 FEATURES12**
 - 4.1 Configuration Enhancements.....12
 - 4.1.1 Search System 1 Hierarchy.....12
 - 4.1.2 Route Report Enhancements.....13
 - 4.2 Figure 4-2 System 1 Route Report – Machine Summary (in Excel)Display Enhancements.....13
 - 4.2.1 Partial Waveform Analysis.....14
 - 4.3 Replication Enhancements.....15
 - 4.3.1 Replication Extensibility.....15
 - 4.3.2 gMSA account support for S1 Replication and DS Services.....15
 - 4.4 Server Security Enhancements.....16
 - 4.4.1 Support Granular Rights.....16
- 5. EDGE DEVICES MONITORING.....17**
 - 5.1 Orbit DCM.....17
 - 5.1.1 Support Long Time Waveform.....17
 - 5.1.2 Speed Input enhancement to 30Khz.....17
 - 5.1.3 Editable High-Pass Corner Frequency for Async Measurements17
 - 5.1.4 Magnetic Pick-up Configuration for Speed Channel.....17
- 6. DECISION SUPPORT V24.2 FEATURES..... 18**
 - 6.1 Connectivity.....18
 - 6.1.1 Heartbeat between DSS and System 1 Database.....18
 - 6.2 Ease of Deployment.....18

6.2.1	Support Smart Copy/Paste across Decision Support Servers.....	18
6.2.2	Rule Upgrade Suppression Support.....	19

1. SYSTEM 1 V24.2 FEATURE OVERVIEW

Table -1-1 : System 1 v24.2 – Improved Productivity

Features		
Configuration Enhancements		
Search System 1 Hierarchy	Users can search System 1 Hierarchy in Configure and Display workspaces using names.	4.1.1
Route Report Enhancements	System 1 supports Route Reports (Machine Summary and Point Details) in Excel format, along with the previously available Word document format. The Route Report now includes Route Collection and Alarm Summary.	4.1.2
Display Enhancement		
Partial Waveform Analysis	A new plot type is introduced which enables the user to zoom in and display spectrum for only the zoomed-in portion of the waveform.	4.2.1
Replication Enhancements		
Replication Extensibility	System 1 extends Rx databases by allowing users to add assets directly to the Rx database as well as add and map Ranger Pro devices to the assets on Rx database.	4.3.1
gMSA User Support for System 1 Services	Users can configure gMSA accounts as log-on users for System 1 Replication Service and Decision Support Server service.	4.3.2
Server Security Enhancements		
Support Granular Rights	System 1 rights listed under the Roles tab are now enhanced to display more specific granular rights which provides users more flexibility and control while assigning rights.	4.4.1
Edge Devices Monitoring		
Orbit DCM* (Functionalities will be available in Q1 2025)		
Long Time waveform	Long Time waveform refers to waveforms collected over a long period of time. Orbit DCM device can be configured from System 1 to collect Long Time waveforms for up to 30mins.	5.1.1
Speed Input enhancement to 30Khz	The device's capability to read input frequency is enhanced up to 30kHz , enabling higher events per ratio support at high speeds.	5.1.2

Editable High Pass Corner Frequency for Async measurements	Edit options are available to configure Fmax and High Pass Corner Frequency to eliminate unwanted frequency components in vibration signals.	5.1.3
Magnetic Pick-up Configuration for Speed Channel	An additional transducer type is available for easy configuration for Magnetic Pick Sensors.	5.1.4

2. DECISION SUPPORT V24.2 FEATURE OVERVIEW

Table 2.1 Decision Support v24.2 Features

Features		
Heartbeat between DSS and System 1 Database	A reportable communication link is created between the Decision Support Server and any System 1 database it is connected to.	6.1.1
Support Smart Copy/Paste across Decision Support Servers	Users can copy deployments from one Decision Support Server to another Decision Support Server.	6.2.1
Rule Upgrade Suppression Support	Users can disable upgrades for rule libraries to reduce potential upgrade issues.	6.2.2

2.1 Decision support is now available to download

[Valid M&S Agreement Required](#)

Starting with System 1 version 23.2, Decision Support Developer will be included with all new orders of System 1. Decision Support and System 1 both remain as separate products. However, they will be delivered through the same download folder in Flexera. Decision Support is now part of the System 1 package, and therefore does not require a separate license for installation. This excludes the Decision Support Analytics (formerly known as InsightPaks) and the DS Analytics library, which also remains as a separate commercial product. For more information on this change, contact your sales manager.

2.2 Decision Support Analytics Support

Existing installations of Decision Support Analytics are supported with Decision Support v23.2. However, if installing Decision Support Analytics for the first time after installing Decision Support v23.2, the latest version of Decision Support Analytics is required.

3. VERSION SUPPORT & OPERATING SYSTEM COMPATIBILITY

3.1 System 1

System 1 follows a semi-annual release cadence with targeted releases in May and November of each year. Versions are fully supported for a minimum of two years from the published date of availability (Refer System 1 Datasheet).

New Versions of System 1 benefit from:

- Compatibility with the latest Microsoft Client & Server Operating Systems
- Client backwards compatibility to previous versions under support (24.2 Client to 23.1 Server DB)
- Database upgrade from previous versions released within last 3 years (22.1→24.2)
- For Replicated setups, database upgrade of Tx and Rx databases from previous versions released within last 2 years (23.1→24.2)
- Security patch and update testing for the latest available version
- Bug fixes included in the latest available version.
- Standard technical support with escalation to engineering as required.

Versions no longer supported:

- Standard support is provided for common FAQ type questions, however, escalation to engineering is not available. Users are encouraged to update software to the latest version to benefit from new features, OS (Operating System) compatibility, and bug fixes.

Table 3-1: System 1 Version Support & OS Compatibility Matrix

System 1 Versions & Support			Windows Server OS				Windows Client OS (64bit)		
Version	Available	End of Support	2022	2019	2016	2012 R2	11*	10**	8.1 UI
24.2	Nov 2024	Nov 2026	✓	✓	✓		✓	✓	
24.1	May 2024	May 2026	✓	✓	✓		✓	✓	
23.2	Nov 2023	Nov 2025	✓	✓	✓		✓	✓	
23.1	May 2023	May 2025	✓	✓	✓		✓	✓	
22.2	Nov 2022	Nov 2024	✓	✓	✓	✓	✓	✓	✓
22.1	May 2022	May 2024	✓	✓	✓	✓	✓	✓	✓

*Windows 11 version compatibility will track Microsoft's published release and support model. The latest version of System 1 will be tested and supported on all versions of Windows 11 under support as published on their website based on the System 1 version's published date of availability.

System 1 v24.2 (Windows 11 Pro/Enterprise 23H2, 22H2)

System 1 v24.1 (Windows 11 Pro/Enterprise 23H2, 22H2)

System 1 v23.2 (Windows 11 Pro/Enterprise 22H2, 21H2)

System 1 v23.1 (Windows 11 Pro/Enterprise 22H2, 21H2)

System 1 v22.2 (Windows 11 Pro/Enterprise 21H2)

**Windows 10 version compatibility will track Microsoft's published release and support model. The latest version of System 1 will be tested and supported on all versions of Windows 10 under support as published on their website based on the System 1 version's published date of availability.

System 1 v24.2 (Windows 10 Pro/Enterprise 22H2)

System 1 v24.1 (Windows 10 Pro/Enterprise 22H2)

System 1 v23.2 (Windows 10 Pro/Enterprise 22H2, 21H2)

System 1 v23.1 (Windows 10 Pro/Enterprise 22H2, 21H2)

System 1 v22.2 (Windows 10 Pro/Enterprise 22H2, 21H2, 21H1)

System 1 v22.1 (Windows 10 Pro/Enterprise 21H2, 21H1, 20H2)

3.2 Decision Support

System 1 Decision Support follows a semi-annual release cadence. Versions are fully supported for a minimum of two years from the published date of availability (see below).

System 1 Compatibility

- Decision Support is designed to work with System 1 version 20.1 and newer, utilizing PostgreSQL for Historical Database (Proficy not supported)

New Versions of System 1 Decision Support Benefit from:

- Compatibility with the latest Microsoft Client & Server Operating Systems
- Client backwards compatibility to previous versions under support (24.2 Client to 20.1 Server DB)
- Security patch & update testing for the latest available version
- Bug fixes included in the latest available version.
- Standard technical support with escalation to engineering as required.

Versions no longer supported:

- Standard support is provided for common FAQ type questions, but users are encouraged to update software to latest version to benefit from new features, OS compatibility, and bug fixes.

4. SYSTEM 1 FEATURES

System 1 v24.2 Feature video located in Bently Nevada Tech Support Training Library

[Valid M&S Agreement Required](#)

4.1 Configuration Enhancements

4.1.1 Search System 1 Hierarchy

System 1 version 24.2 allows users to search hierarchy nodes in Machine, Device, Route, and Template hierarchies in Configure and Display workspaces.

A Search bar with a filter is available at the top of the hierarchy pane. To filter search results, select a hierarchy level from the filter drop down menu or select All to include all hierarchy levels. Use Display name, Tag Name, Serial Number, or EntityId to search a hierarchy node.

The hierarchy pane displays matching results based on the search term entered and the selected filter. On clicking a search result, users are navigated to the selected node in the hierarchy.

Use the Close icon to cancel a search



Figure 4-1 Search Hierarchy with keyword "Deviation" for Machine Component

4.1.2 Route Report Enhancements

System 1 version 24.2 now generates the Route Report (Machine Summary and Route Report – Point Details) in Excel format in addition to the previously available Word document format.

Machine Summary report now includes Route Collection Summary and Route Alarm Summary. The Machine Summary report also shows the number of days since data collected; a new column added in Machine Summary table.

Route Report (Machine Summary and Point Details) shows a new Route Status “Missed Twice +”, if data is not collected for more than twice the Collection Interval days and Tolerance days.

In version 24.2, System 1 displays Schedule in the General tab and in the Route when asset/machine is selected in Route hierarchy. Next Collection Due Date calculation is now updated. At the Route level, it shows the most recent date when data was collected on a machine or a date when data was collected for majority of machines within a route.

	A	C	D	E	F	H	J	
1	System 1 Route Report – Machine Summary						01 Oct 2024	
2	Database:	MTC_Plant	Work Order No.	Work Request No.				
3								
4	Folder: Route Folder_Bi-Weekly			Route: Route_Group1				
5	Interval [Days]: 14			Tolerance [Days]: 0				
6	Total Machines: 4							
7								
8	Route Collection Summary							
9	Total Machines on Route	4	100%					
10	Machines Collected	1	25%					
11	Machines Due	0	0%					
12	Machines Overdue (Missed Once)	2	50%					
13	Machines Overdue (Missed Twice +)	1	25%					
14	Machines Never Monitored	0	0%					
15								
16	Route Alarm Summary							
17	Total Machines on Route	4	100%					
18	Machines not in alarm	0	0%					
19	Machines with level 1 alarm	0	0%					
20	Machines with level 2 alarm	0	0%					
21	Machines with level 3 alarm	0	0%					
22	Machines with level 4 alarm	4	100%					
23								
26	Machine Name	Tag Name	Collection Status	Last Collected	Days Since Collected	Next Due	Alarm Status	
27	Mtr-Gbx_Pmp1	GenericMotorGbxPumpSet	Missed Twice +	01 Aug 2024	60	15 Aug 2024	4	
28	Mtr-Belt-CTF_MI	MotorBeltCTF	Scheduled	24 Sep 2024	6	08 Oct 2024	4	
29	MtrFan2	GenericMotorFanSet	Overdue	17 Sep 2024	13	01 Oct 2024	4	
30	Mtr-Gbx_CTF_M3	MtrGbx1StgBevCTF	Overdue	13 Sep 2024	17	27 Sep 2024	4	
31								
32								
33								
34								
35								
	Route_Group1 Route_Group2 Route_Group3 +							

Figure 4-2 System 1 Route Report – Machine Summary (in Excel)

4.2 Display Enhancements

4.2.1 Partial Waveform Analysis

System 1 v24.2 introduces a new Plot type, Partial Waveform Analysis, that aids in analyzing the selected portion of waveforms. User can zoom into a portion of the waveform and the spectrum of the zoomed-in part is displayed in the bottom section of the plot. This plot type is supported for both Async and Sync waveforms for all devices.

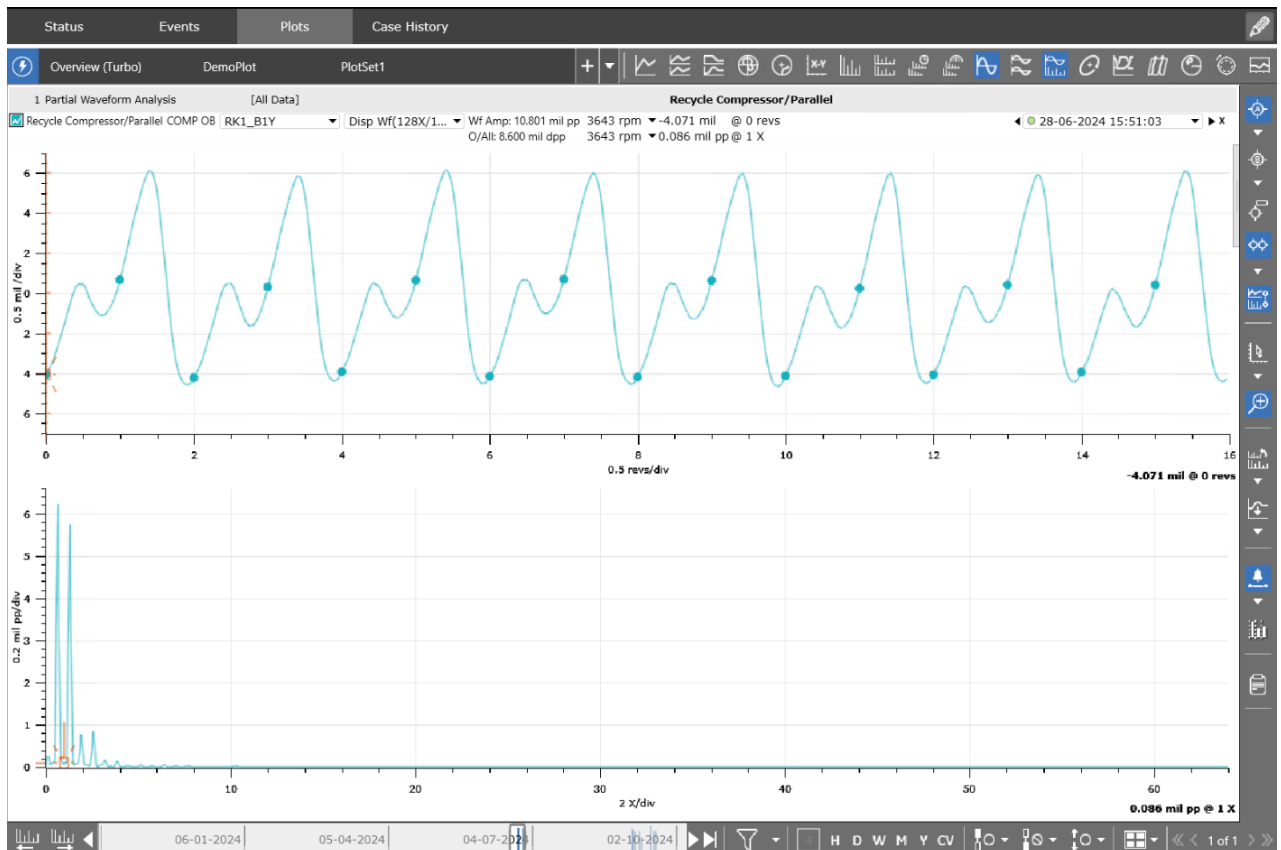


Figure 4-3 Partial Waveform Analysis

4.3 Replication Enhancements

4.3.1 Replication Extensibility

System 1 v24.2 now supports the ability to add new assets and Ranger Pro devices directly to a unidirectional Rx database. Combining this with the ability to add OPC Servers and portable data directly to Rx databases (available from version 24.1), further extends asset management at Rx network in unidirectional databases. In addition to mapping Rx Ranger Pro and OPC devices to Rx-extended machine trains, users can also map Tx devices to the Rx-extended machine trains, unlocking the ability to perform most asset management actions directly at the Rx network. Note: state configuration is currently NOT supported at the Rx network level.

Additionally, users can add Ranger Pro devices to bidirectional Rx and Tx databases using the “Server Location” property in the same manner as OPC Servers.

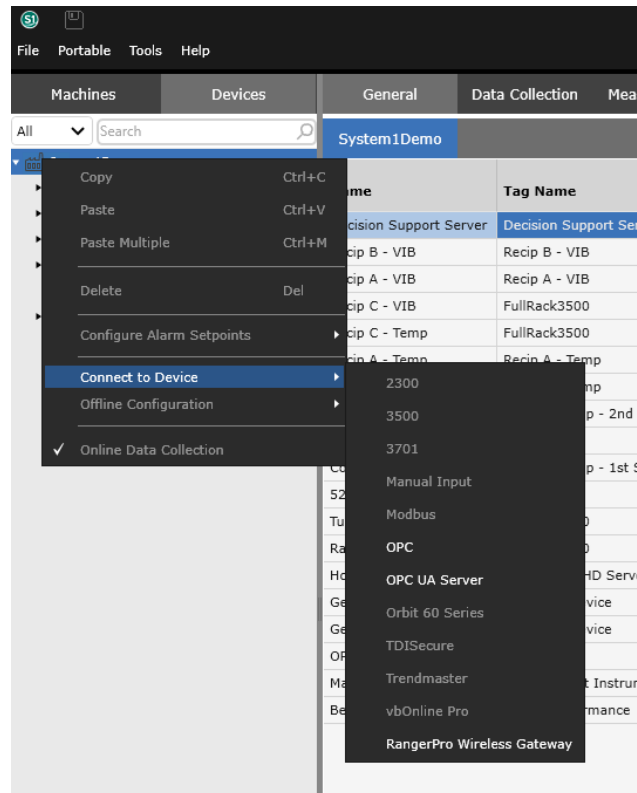


Figure 4-4 Adding Ranger Pro Wireless Gateways are now available on Rx databases

4.3.2 gMSA account support for SI Replication and DS Services

System 1 v24.2 enables users to configure System 1 Replication and Decision Support Server services to run as gMSA (group managed service accounts) accounts, further enabling additional system compatibility.

4.4 Server Security Enhancements

4.4.1 Support Granular Rights

With System 1 v24.2, the "Roles" tab in the Server Security dialog box now shows new granular rights for features under Configuration, Database Management, Display Administration, Display Users, and User Managements sections, which provide more control on user rights.

Server Security			
Users		Roles	
Actions	Administrator	Advanced	Basic
Configuration	<input checked="" type="checkbox"/>	<input type="checkbox"/>	<input type="checkbox"/>
Firmware Upgrade	<input checked="" type="checkbox"/>	<input checked="" type="checkbox"/>	<input type="checkbox"/>
Manage Asset/Device Configuration	<input checked="" type="checkbox"/>	<input checked="" type="checkbox"/>	<input type="checkbox"/>
Manage OPC UA Certificate	<input checked="" type="checkbox"/>	<input type="checkbox"/>	<input type="checkbox"/>
Manage Setpoints	<input checked="" type="checkbox"/>	<input checked="" type="checkbox"/>	<input type="checkbox"/>
Manage Templates	<input checked="" type="checkbox"/>	<input checked="" type="checkbox"/>	<input type="checkbox"/>
Override Configuration	<input checked="" type="checkbox"/>	<input type="checkbox"/>	<input type="checkbox"/>
Synchronize Device	<input checked="" type="checkbox"/>	<input checked="" type="checkbox"/>	<input type="checkbox"/>
Database Management	<input checked="" type="checkbox"/>	<input type="checkbox"/>	<input type="checkbox"/>
Backup/Archive Database	<input checked="" type="checkbox"/>	<input type="checkbox"/>	<input type="checkbox"/>
Enable/Disable Online Data Collection	<input checked="" type="checkbox"/>	<input type="checkbox"/>	<input type="checkbox"/>
Manage Database Settings	<input checked="" type="checkbox"/>	<input type="checkbox"/>	<input type="checkbox"/>
Manage Replication	<input checked="" type="checkbox"/>	<input type="checkbox"/>	<input type="checkbox"/>
Modify Database	<input checked="" type="checkbox"/>	<input type="checkbox"/>	<input type="checkbox"/>
Display Administration	<input checked="" type="checkbox"/>	<input checked="" type="checkbox"/>	<input type="checkbox"/>
Delete Data	<input checked="" type="checkbox"/>	<input checked="" type="checkbox"/>	<input checked="" type="checkbox"/>
Delete HMIs	<input checked="" type="checkbox"/>	<input checked="" type="checkbox"/>	<input type="checkbox"/>
Delete Notes	<input checked="" type="checkbox"/>	<input checked="" type="checkbox"/>	<input type="checkbox"/>
Delete Plot Record	<input checked="" type="checkbox"/>	<input checked="" type="checkbox"/>	<input type="checkbox"/>
Delete Plot Set	<input checked="" type="checkbox"/>	<input checked="" type="checkbox"/>	<input type="checkbox"/>
Delete Reviews	<input checked="" type="checkbox"/>	<input checked="" type="checkbox"/>	<input type="checkbox"/>
Edit HMIs	<input checked="" type="checkbox"/>	<input checked="" type="checkbox"/>	<input type="checkbox"/>
Edit Notes	<input checked="" type="checkbox"/>	<input checked="" type="checkbox"/>	<input type="checkbox"/>
Edit Plot Set	<input checked="" type="checkbox"/>	<input checked="" type="checkbox"/>	<input type="checkbox"/>
Edit Reviews	<input checked="" type="checkbox"/>	<input checked="" type="checkbox"/>	<input type="checkbox"/>
Edit/Delete Reference Data Set	<input checked="" type="checkbox"/>	<input checked="" type="checkbox"/>	<input type="checkbox"/>
Manage Notification	<input checked="" type="checkbox"/>	<input checked="" type="checkbox"/>	<input type="checkbox"/>
Manage Performance Map	<input checked="" type="checkbox"/>	<input checked="" type="checkbox"/>	<input type="checkbox"/>
Reset Alarm Latch	<input checked="" type="checkbox"/>	<input checked="" type="checkbox"/>	<input type="checkbox"/>
Suppress/Unsuppress Events	<input checked="" type="checkbox"/>	<input checked="" type="checkbox"/>	<input type="checkbox"/>
Display Users	<input checked="" type="checkbox"/>	<input checked="" type="checkbox"/>	<input type="checkbox"/>
Acknowledge Alarms	<input checked="" type="checkbox"/>	<input checked="" type="checkbox"/>	<input checked="" type="checkbox"/>
Add HMIs	<input checked="" type="checkbox"/>	<input checked="" type="checkbox"/>	<input type="checkbox"/>
Add Notes	<input checked="" type="checkbox"/>	<input checked="" type="checkbox"/>	<input checked="" type="checkbox"/>
Add Plot Record	<input checked="" type="checkbox"/>	<input checked="" type="checkbox"/>	<input checked="" type="checkbox"/>

Figure 4-5 Granular Rights

5. EDGE DEVICES MONITORING

5.1 Orbit DCM

! Note : Current version of Orbit DCM is not compatible with System 1 version 24.2. The compatible version is coming in Q1 2025 !

5.1.1 Support Long Time Waveform

System 1 v24.2 supports configuration and data collection of Long Time waveforms for Orbit DCM devices. The device can be configured to collect up to 30 minutes long continuous waveforms. Additionally, users can configure a Long-Time waveform for paired channels to collect data for both channels in sync.

5.1.2 Speed Input enhancement to 30Khz

System 1 v24.2 supports the device enhancement in Orbit DCM to accept input frequencies up to 30kHz (18,00,000 RPM)

5.1.3 Editable High-Pass Corner Frequency for Async Measurements

System 1 v24.2 enables configuring Fmax, High Pass Corner frequency to eliminate unwanted frequency components in the vibration signal.

5.1.4 Magnetic Pick-up Configuration for Speed Channel

System 1 v24.2 provides an additional Transducer option for Speed Channels for the Magnetic Pick-up sensor. On selection of this transducer, System 1 shows the necessary properties to configure this sensor.

6. DECISION SUPPORT V24.2 FEATURES

DS Enhancements video located in Bently Nevada Tech Support Training Library

[Valid M&S Agreement Required](#)

6.1 Connectivity

6.1.1 Heartbeat between DSS and System 1 Database

In Decision Support v24.2, a heartbeat communication between Decision Support Servers (DSSs) and connected System 1 databases is established to accurately communicate the connection health. If System 1 loses connection to a DSS, a Not Communicating event is logged to notify the user of potential system issues.

Machines		Devices		Status	Events	Plots	Case History
All				Alarms	States	System Health	Suppressed
HarperS1							
Decision Support Servers							
Decision Support Server							
Group > Steam Turbine (SF)							
Description	Entered	Exited	Activity	Location	Source	Source Computer Name	
Not communicating	10/9/2024 3:44:17 PM	10/9/2024 3:46:22 PM	Cleared	Decision Support Server	System	HARPER	
Not communicating	10/9/2024 3:30:02 PM	10/9/2024 3:30:32 PM	Cleared	Decision Support Server	System	HARPER	
Not communicating	10/9/2024 3:12:22 PM	10/9/2024 3:13:26 PM	Cleared	Decision Support Server	System	HARPER	
Not communicating	10/9/2024 2:59:04 PM	10/9/2024 3:00:07 PM	Cleared	Decision Support Server	System	HARPER	

Figure 6-1 Not Communicating Event in System 1 when no communication between DSS and System 1

6.2 Ease of Deployment

6.2.1 Support Smart Copy/Paste across Decision Support Servers

Decision Support v24.2 extends the smart copy/paste functionality across Decision Support Servers. Users can now copy deployments from one DSS to another DSS for improved rule deployment efficiency.

Additionally, the smart copy/paste feature now supports copying rules that are mapped to the output of other rules, and it automatically attempts to remap to the same rule in the target location upon pasting. Previously, this mapping was not retained upon pasting, so this new functionality further reduces potential deployment time by automatically attempting to map to the same rule if available.

6.2.2 Rule Upgrade Suppression Support

Decision Support v24.2 supports enabling and disabling rule upgrades for Decision Support Servers and child rule libraries. Disabling upgrades for rule libraries suppresses any notifications of available upgrades for rule deployments, minimizing the chances of users upgrading rules that could cause issues before those rules are ready and vetted for deployment.

Libraries are disabled for upgrades by default, starting with System 1 v24.2. This helps minimize users accidentally upgrading rules that could break deployments.

Copyright 2024 Baker Hughes Company. All rights reserved.



Bentley Nevada, System 1, Trendmaster, ADAPT, vbSeries, RangerPro, ADRE, and Orbit Logo are registered trademarks of Bentley Nevada, a Baker Hughes business, in the United States and other countries. The Baker Hughes logo is a trademark of Baker Hughes Company. All other product and company names are trademarks of their respective holders. Use of the trademarks does not imply any affiliation with or endorsement by the respective holders.

Baker Hughes provides this information on an "as is" basis for general information purposes. Baker Hughes does not make any representation as to the accuracy or completeness of the information and makes no warranties of any kind, specific, implied, or oral, to the fullest extent permissible by law, including those of merchantability and fitness for a particular purpose or use. Baker Hughes hereby disclaims any and all liability for any direct, indirect, consequential or special damages, claims for lost profits, or third-party claims arising from the use of the information, whether a claim is asserted in contract, tort, or otherwise. Baker Hughes reserves the right to make changes to specifications and features shown herein, or discontinue the product described at any time without notice or obligation. Contact your Baker Hughes representative for the most current information.

The information contained in this document is the property of Baker Hughes and its affiliates; and is subject to change without prior notice. It is being supplied as a service to our customers and may not be altered or its content repackaged without the express written consent of Baker Hughes. This product or associated products may be covered by one or more patents. See [Bentley.com/legal](https://www.bentley.com/legal).

1631 Bentley Parkway South, Minden, Nevada USA 89423

Phone: 1.775.782.3611 (US) or [Bentley.com/support](https://www.bentley.com/support)

[Bentley.com](https://www.bentley.com)