

SCOUT200 version 25.1 [June 2025]

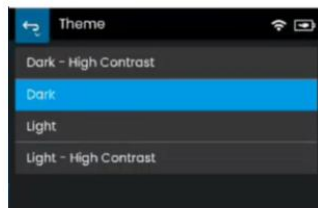


Bently Nevada presents the v25.1 release of the SCOUT200 S1 Collector App, delivering new and enhanced capabilities:

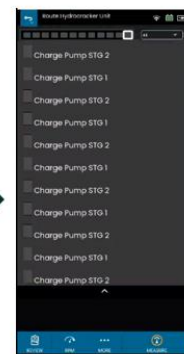
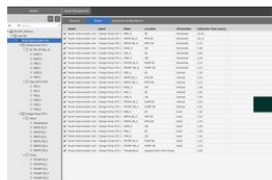
Bently Nevada remains focused on delivering the world's premier plantwide machinery management solutions through bi-annual product releases.

SCOUT200 v25.1 Features

Supports new High Contrast Theme to improve text readability and user preferences.



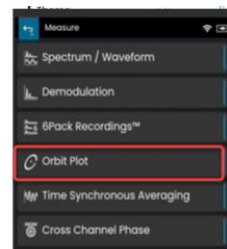
Match route hierarchy in S1 Collector app for re-ordered machine points of a Route in System 1.



Improve Alarm severity colors to match with System 1.



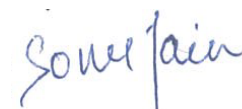
Orbit Plot in S1 Collector app



Thank you,



Gaia Rossi, Product Line Manager



Sonu Jain, Technical Product Manager

On behalf of your SCOUT200 Leadership and Development Teams.

1. V25.1 CAPABILITY OVERVIEW

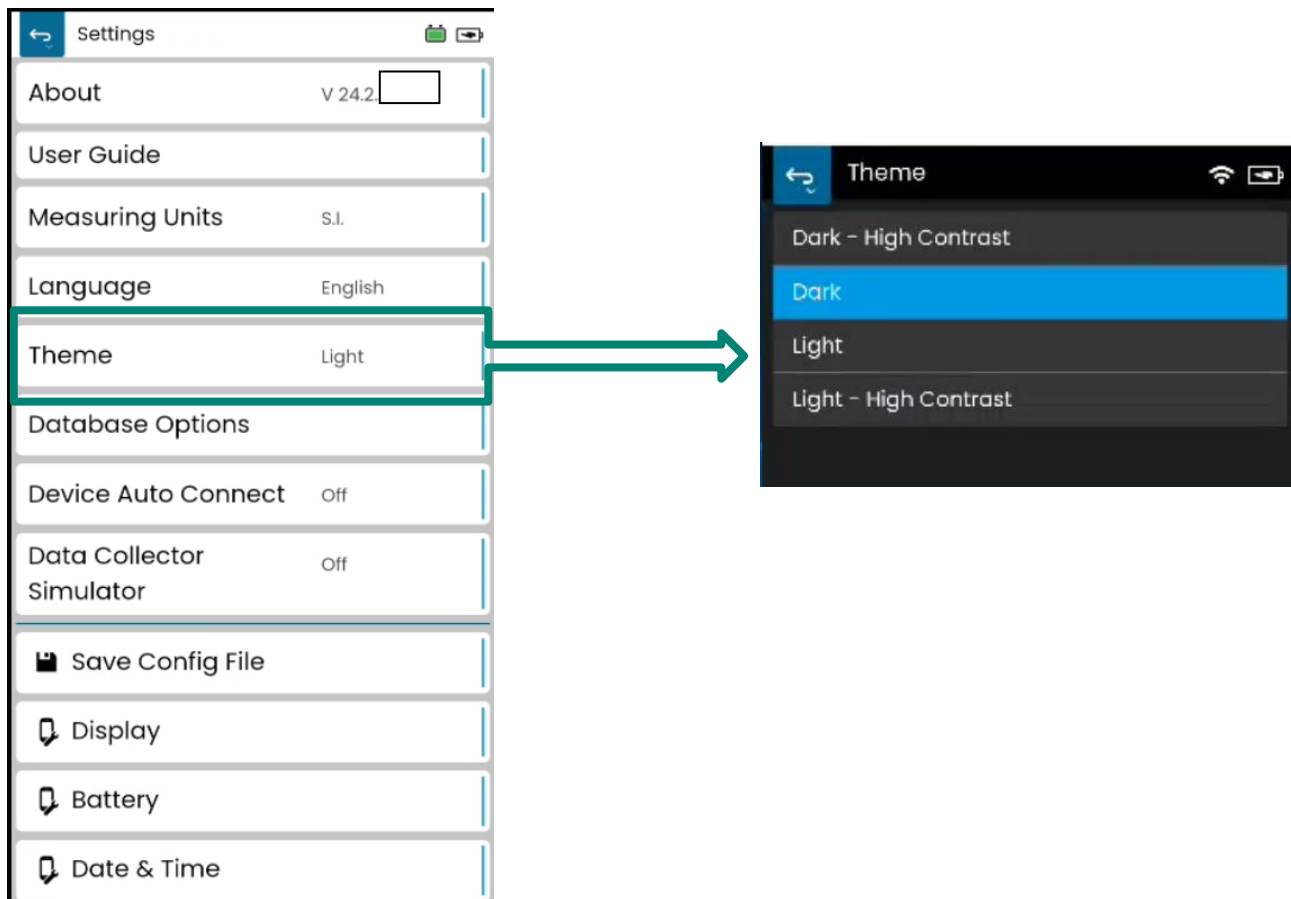
SCOUT200 v25.1 Capabilities		
<u>Feature</u>	<u>Description</u>	<u>Section</u>
Supports new High Contrast Theme to improve text readability and user preferences.	S1 Collector app enables users to select the theme from Dark – High Contrast, Dark, Light and Light – High Contrast. Select High contrast theme to use in bright sunlight to get better readability.	2.1
Match route hierarchy in S1 Collector app for re-ordered machine points of a Route in System 1.	S1 collector matches System 1 re-ordered points in Route hierarchy to collect data in that order in the field.	2.2
Orbit Plot in S1 Collector app	S1 Collector app now shows Orbit Plot for off Route Orbit measurements	2.3
Improvise Alarm severity colors in S1 Collector app to match with System 1.	S1 Collector app now shows the severity colors same as System 1 severity colors	2.4

2. SCOUT200 FEATURES

2.1 Supports new High Contrast Theme to improve text readability and user preferences.

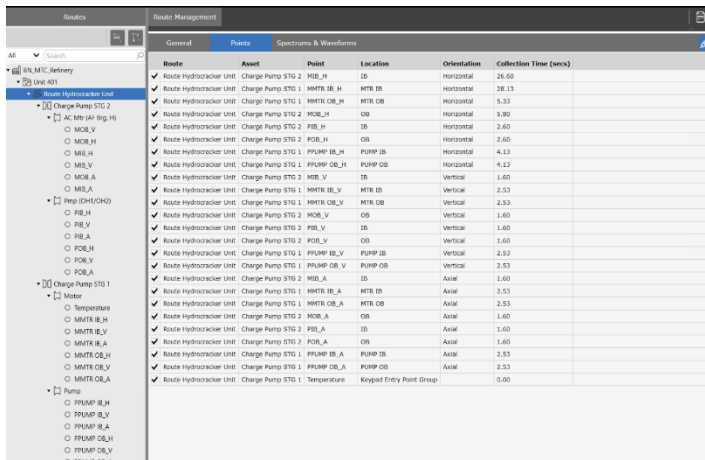
SI Collector app v25.1 enables users to select the theme from Dark – High Contrast, Dark, Light and Light – High Contrast. Select High contrast theme to use in bright sunlight to get better readability.

Save Config File includes all the applied Theme settings. This file is loaded automatically when the app is launched, and therefore theme will be applied accordingly.

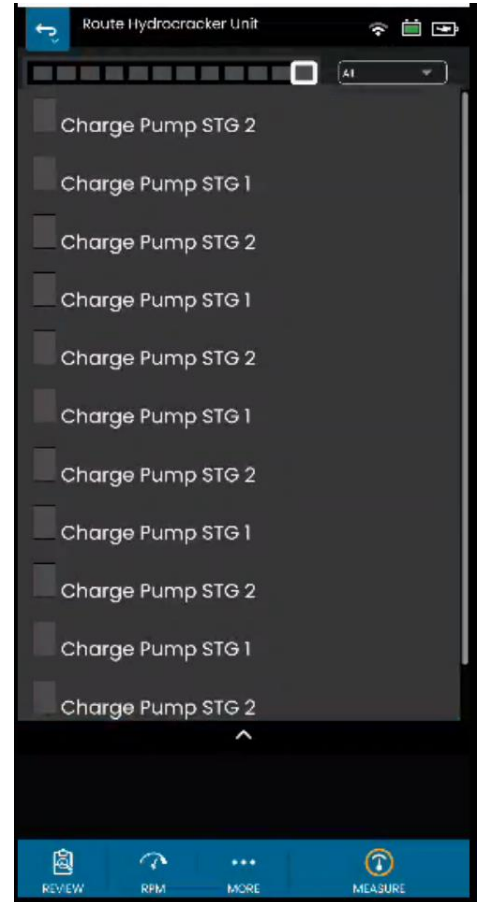


2.2 Match route hierarchy in S1 Collector app for re-ordered machine points of a Route in System 1.

With System 1 v25.1, users can reorder points across different machine and machine trains under a route. Reordered route is sent to the portable device and data is collected in that order in the field. S1 Collector app v25.1 displays the reordered route, and data is collected in that order in the field.



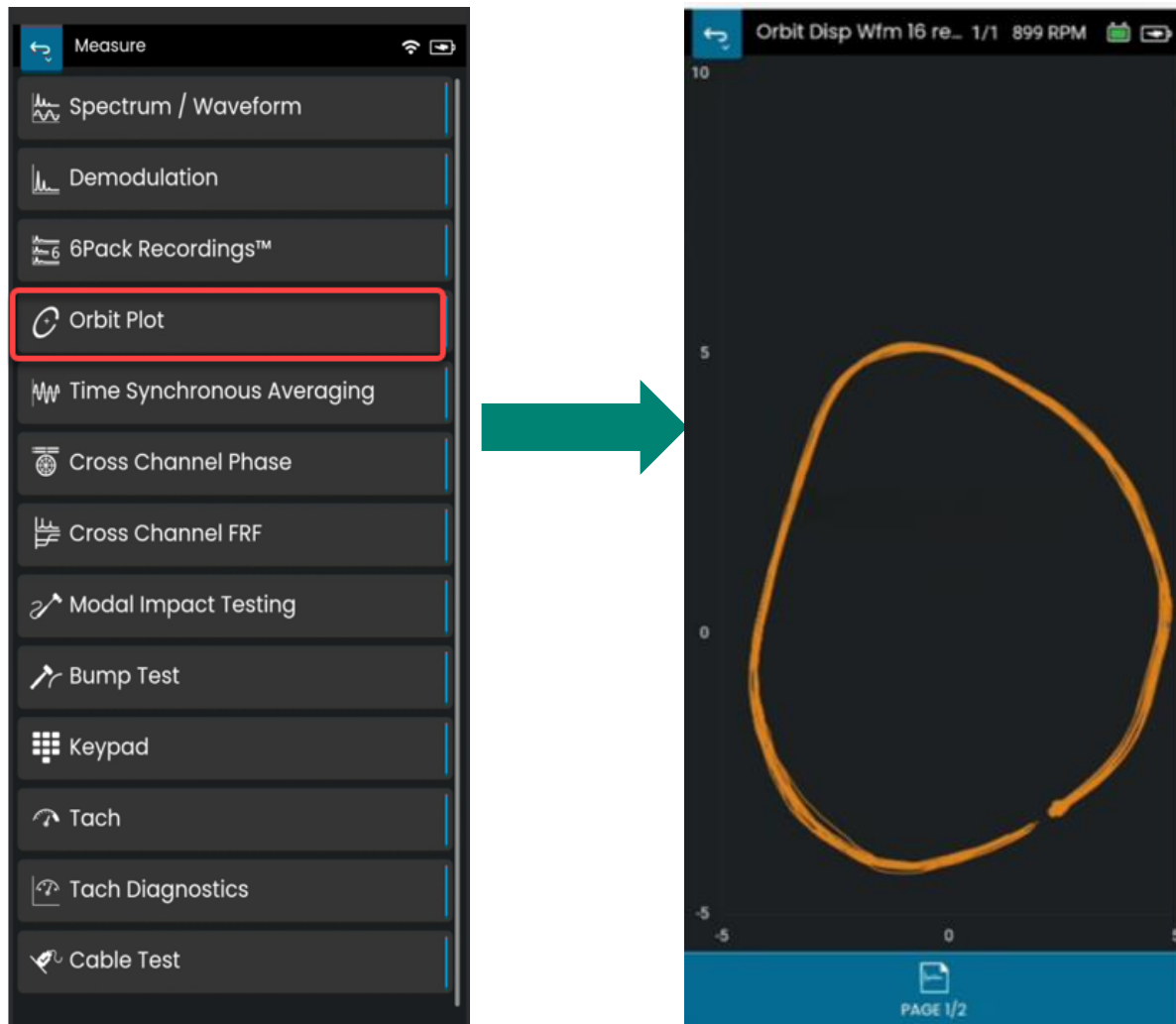
Route	Asset	Point	Location	Orientation	Collection Time (secs)
✓ Route Hydrocracker Unit	Charge Pump STG 2	MOB_H	IS	Horizontal	26.69
✓ Route Hydrocracker Unit	Charge Pump STG 1	MMTR_IB_H	MTB_IB	Horizontal	28.13
✓ Route Hydrocracker Unit	Charge Pump STG 2	MMTR_OB_H	MTB_OB	Horizontal	5.33
✓ Route Hydrocracker Unit	Charge Pump STG 2	MOB_H	OS	Horizontal	5.80
✓ Route Hydrocracker Unit	Charge Pump STG 2	PFB_H	IS	Horizontal	2.60
✓ Route Hydrocracker Unit	Charge Pump STG 2	POB_H	OS	Horizontal	2.60
✓ Route Hydrocracker Unit	Charge Pump STG 1	PPUMP_IB_H	PUMP_IB	Horizontal	4.13
✓ Route Hydrocracker Unit	Charge Pump STG 1	PPUMP_OB_H	PUMP_OB	Horizontal	4.13
✓ Route Hydrocracker Unit	Charge Pump STG 2	MOB_V	IS	Vertical	1.60
✓ Route Hydrocracker Unit	Charge Pump STG 1	MMTR_IB_V	MTB_IB	Vertical	2.53
✓ Route Hydrocracker Unit	Charge Pump STG 1	MMTR_OB_V	MTB_OB	Vertical	2.53
✓ Route Hydrocracker Unit	Charge Pump STG 2	MOB_V	OS	Vertical	1.60
✓ Route Hydrocracker Unit	Charge Pump STG 2	PFB_V	IS	Vertical	1.60
✓ Route Hydrocracker Unit	Charge Pump STG 2	POB_V	OS	Vertical	1.60
✓ Route Hydrocracker Unit	Charge Pump STG 1	PPUMP_IB_V	PUMP_IB	Vertical	2.53
✓ Route Hydrocracker Unit	Charge Pump STG 1	PPUMP_OB_V	PUMP_OB	Vertical	2.53
✓ Route Hydrocracker Unit	Charge Pump STG 2	MOB_A	IS	Axial	1.60
✓ Route Hydrocracker Unit	Charge Pump STG 1	MMTR_IB_A	MTB_IB	Axial	2.53
✓ Route Hydrocracker Unit	Charge Pump STG 2	MOB_A	OS	Axial	1.60
✓ Route Hydrocracker Unit	Charge Pump STG 2	PFB_A	IS	Axial	1.60
✓ Route Hydrocracker Unit	Charge Pump STG 2	POB_A	OS	Axial	1.60
✓ Route Hydrocracker Unit	Charge Pump STG 1	PPUMP_IB_A	PUMP_IB	Axial	2.53
✓ Route Hydrocracker Unit	Charge Pump STG 1	PPUMP_OB_A	PUMP_OB	Axial	2.53
✓ Route Hydrocracker Unit	Charge Pump STG 1	Temperature	Keypad Entry Point Group		0.00



Improvise Alarm severity colors in S1 Collector app to match with System 1.

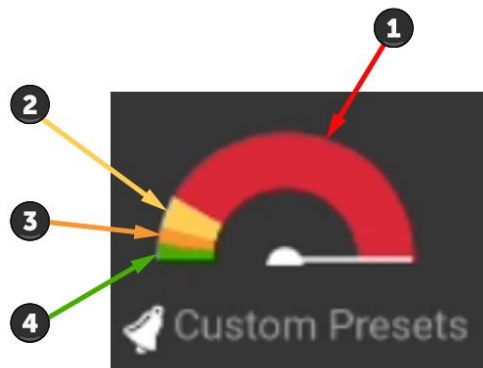
2.3 Orbit Plot in S1 Collector app

S1 Collector now allow users to collect Orbit Plot measurement as an off-route measurement. This displays Orbit plot on page 1 and page 2 shows Timebase plot.



2.4 Improvise Alarm severity colors in S1 Collector app to match with System 1.

S1 Collector app now shows the severity colors same as System 1 severity colors.



1. Danger
2. Alert
3. Warning
4. No Alarm

These colors are used to illustrate the severity of alarms. The app also displays the alarm type below the gauge.

Copyright 2025 Baker Hughes Company. All rights reserved.



Bently Nevada, System 1, Trendmaster, ADAPT, vbSeries, RangerPro, ADRE, and Orbit Logo are registered trademarks of Bently Nevada, a Baker Hughes Business, in the United States and other countries. The Baker Hughes logo is a trademark of Baker Hughes Company. All other product and company names are trademarks of their respective holders. Use of the trademarks does not imply any affiliation with or endorsement by the respective holders.

Baker Hughes provides this information on an “as is” basis for general information purposes. Baker Hughes does not make any representation as to the accuracy or completeness of the information and makes no warranties of any kind, specific, Implied, or oral, to the fullest extent permissible by law, including those of merchant ability and fitness for a particular purpose or use. Baker Hughes here by disclaims any and all liability for any direct, indirect, consequential, or special damages, claims for lost profits, or third-party claims arising from the use of the information, whether a claim is asserted in contract, tort, or otherwise. Baker Hughes reserves the right to make changes in specifications and features shown herein, or discontinue the product described at any time without notice or obligation. Contact your Baker Hughes representative for the most current information.

The information in this document is the property of Baker Hughes and its affiliates and is subject to change without notice. It is being supplied as a service to our customers and may not be altered or its content repackaged without the express written consent of Baker Hughes. This product or associated products may be covered by one or more patents. See [Bentley.com/legal](https://www.bentley.com/legal).

1631 Bently Parkway South, Minden, Nevada USA 89423

Phone: 1.775.782.3611 or 1.800.227.5514 (US only)

[Bentley.com](https://www.bentley.com)