

7.2 Updating the PT900 transmitter software

To update the PT900 transmitter software, complete the following steps:

1. Obtain the image file (*ipl-ifs-PT900_vx.x.xx_svnxxx.bin*) for the new PT900 software version.
2. Rename the new image file as *Image.bin*.
3. Copy the new image.bin file to the PT900 from a PC, using a USB cable as shown in Figure 119 below.



Figure 119: USB cable connected to the transmitter

NOTE: If an old image.bin file is already on the PT900, overwrite it.

NOTE: The *image.bin* file should be copied to the root directory of the PT900, as shown in Figure 120 below.

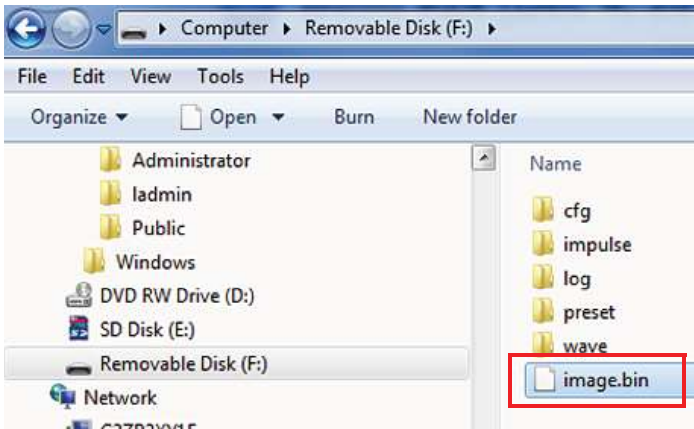


Figure 120: Image.bin file location on PT900

4. In the *app transmitter* menu, click the *update* button (see Figure 121 below) to start the update.

The system will check the validation of the new image file by checksum. If the check is OK, the new software will load in the next reboot. If the check is NO, the original software will load in the next reboot.

5. At the screen shown in Figure 122 below, click the OK button to confirm the update and continue.



Figure 121: UPDATE button in TRANSMITTER menu

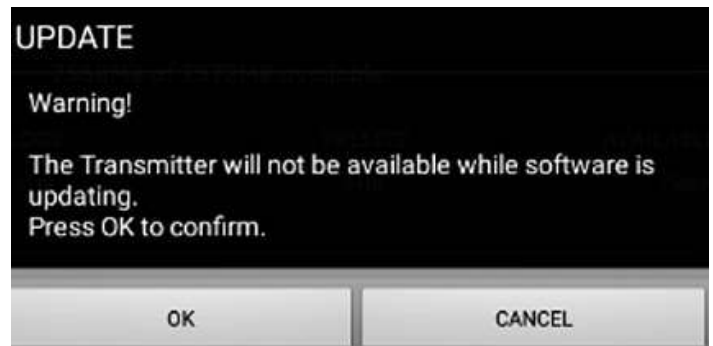


Figure 122: Update confirmation screen

The update will take about 30 seconds to complete, and the screen shown in *Figure 123* below will be displayed during the update.

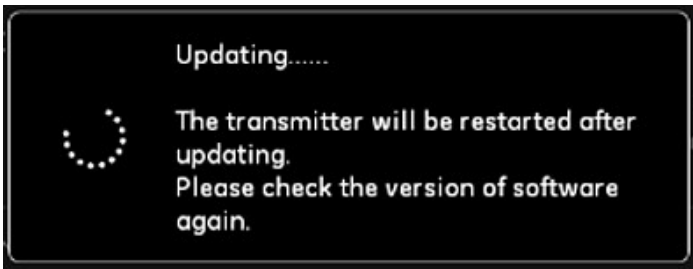


Figure 123: Update in progress screen

6. After the transmitter reboots, the message shown in *Figure 124* below will pop up. Click the *ok* button to reconnect the transmitter.



Figure 124: Transmitter reconnection screen

7. Go to the *transmitter* menu (see *Figure 118* on page 51) and verify that the device information is correct.

If you had any problems during the update, make sure that the following conditions were met:

- Make sure that the power is always *on* during an update, and check that the battery capacity is > 20% or the AC power adapter is connected.
- Make sure that the transmitter is *not* in configure mode. It must be in either IDLE or normal measurement mode.
- If you want to reinstall your old system *presets*, do not delete the preset directory on the PT900.
- If you want the original factory settings, click *reset*.
- Sometimes, the new software will include a new version of the factory *presets*. If so, the old *presets* will automatically be overwritten by new ones during the update.