

A worker wearing a blue shirt, jeans, and a yellow safety harness is operating a Raymond forklift in a warehouse aisle. The aisle is lined with high shelves filled with blue plastic bins, each containing various parts. The forklift has a bright light on top and the brand name 'RAYMOND' is visible on its mast. The worker is looking towards the shelves.

# Masoneilan™ OEM Parts

Exceptional Performance to  
Handle the Toughest Conditions

**Masoneilan**  
a Baker Hughes business



# Masoneilan Valve Parts from Baker Hughes

For more than a century, Masoneilan valve parts have delivered exceptional performance. Expertly developed and rigorously tested, they meet high standards for quality, safety and dependability. That tradition of excellence continues today with the original Masoneilan parts program from Baker Hughes.

## A Tireless Commitment to Research and Development

Original Masoneilan valve parts are built for specific applications, designed and subjected to a strenuous testing regimen to ensure years of reliable, cost-effective operation, and carefully installed with precision by factory-certified Masoneilan Authorized Repair Center (MARC™) representatives.

## Sophisticated Parts Development

Equipped with advanced tools, equipment and technology, Baker Hughes' Research and Development and Testing Facilities support some of the most sophisticated parts development and quality assurance initiatives. Our impressive ISO 9000-certified sites and our team of experts apply industry practices and processes to create exceptional products.

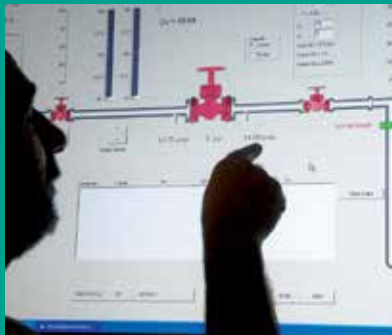
## Many Parts are Difficult to Reverse Engineer

Third parties typically have no way of knowing if a special material has been applied or whether the surface has been specially treated with processes such as "shot peening" to induce compressive stress. Attempting to recreate the part without the correct surface or material treatments could result in stress corrosion cracking when the part is put into service, and can negatively affect critical sealing and guiding functionality. This can shorten the life of the control valve, and can diminish positioning performance.

## Engineered for Quality

We take quality further by engineering valve parts to meet exact application specifications through a variety of specialized construction techniques, processes, treatments and materials. As a result, it is hard to fully duplicate or reverse-engineer a Masoneilan valve part.

Depending on the circumstances, any slight deviation from the original design, materials or critical treatment processes could result in problems such as corrosion, cracking, poor positioning control, or sealing performance and shorter service life. More importantly, design alterations, including unintentional ones, could pose safety threats.



# Expertly Developed, Rigorously Tested

## Use Only Original Masoneilan Valve Parts

Do you know the exact tolerances applied to this face and the thickness that is needed to provide endurance and exact shut-off control? A third party part vendor probably doesn't. We do. Our Computer Numerically Controlled (CNC) equipment and robotic hard-facing machine can provide exact tolerances for enhanced performance.

## Safeguard Your Investment

Design alterations, including unintentional ones, could pose safety threats. Replicators might not know the reason for the design of a critical feature, material, or process; can they provide safe performance? Use genuine OEM parts; don't take the risk by using copies. Plus, using Masoneilan valve parts helps ensure that your valve warranty remains intact.

## Global Service Network

Quality products combined with expert service have made Baker Hughes an industry innovator for more than a century. Baker Hughes offers that expertise with more than 80 Masoneilan Authorized Repair Centers (MARC) located in over 30 countries worldwide. You can rely on a MARC location near you for convenient service and quick responsiveness.

Each MARC location adheres to ISO 9000 standards and is staffed with highly qualified technicians who deliver exceptional support and technical expertise. All MARC facilities are equipped with machine tools and inspection facilities as well as assembly, paint, and test equipment – all backed by Baker Hughes' Quality Assurance.

## Superior Dependability

Genuine Masoneilan valve parts are manufactured to the exacting requirements of the original valve, allowing us to deliver the most dependable long-term performance, help prevent unscheduled downtime, and reduce the need for costly, time-consuming repairs.



## Direct Sales Office Locations

### Australia

Brisbane  
Phone: +61-7-3001-4319

Perth  
Phone: +61-8-6595-7018

Melbourne  
Phone: +61-3-8807-6002

### Brazil

Phone: +55-19-2104-6900

### China

Phone: +86-10-5738-8888

### France

Courbevoie  
Phone: +33-1-4904-9000

### India

Mumbai  
Phone: +91-22-8354790

New Delhi

Phone: +91-11-2-6164175

### Italy

Phone: +39-081-7892-111

### Japan

Tokyo  
Phone: +81-03-6871-9008

### Korea

Phone: +82-2-2274-0748

### Malaysia

Phone: +60-3-2161-03228

### Mexico

Phone: +52-55-3640-5060

### Russia

Veliky Novgorod  
Phone: +7-8162-55-7898

Moscow

Phone: +7-495-585-1276

### Saudi Arabia

Phone: +966-3-341-0278

### Singapore

Phone: +65-6861-6100

### South Africa

Phone: +27-11-452-1550

### South & Central America and the Caribbean

Phone: +55-12-2134-1201

### Spain

Phone: +34-935-877-605

### United Arab Emirates

Phone: +971-4-8991-777

### United Kingdom

Phone: +44-7919-382-156

### United States

Houston, Texas  
Phone: +1-713-966-3600

Find the nearest local Channel Partner in your area:

[valves.bakerhughes.com/contact-us](http://valves.bakerhughes.com/contact-us)

## Tech Field Support & Warranty:

Phone: +1-866-827-5378

[valvesupport@bakerhughes.com](mailto:valvesupport@bakerhughes.com)

[valves.bakerhughes.com](http://valves.bakerhughes.com)

**Baker Hughes** 