

System 1 Integrated APM

A single ecosystem for comprehensive asset performance management

Industrial operators are striving to digitally transform their operations through the adoption of asset performance management (APM) tools. 70% of companies have, or are working on, a digital transformation strategy, but many still struggle with performance improvements*.

When it comes to implementing an APM approach, it's critical to:

1. Set an optimal asset care plan to minimize costs, manage risk, and deliver the required performance
2. Execute the care plan as efficiently as possible and capture an accurate history of the work completed
3. Monitor the condition of assets to:
 - ensure they are operating in alignment with the dynamic operating context and care plan
 - identify impending failures and trigger corrective actions

"70% of companies have, or are working on, a digital transformation strategy, but many still struggle with performance improvements."*

— Frost & Sullivan

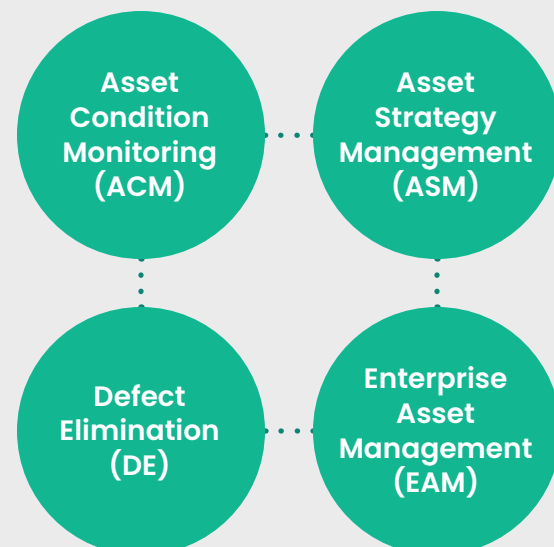
* FS_Bently_Nevada_VIS_11192021_Final.pdf

Why Bently Nevada?

Our **System 1 Integrated APM** is a full-stack asset management ecosystem that digitally connects the silos of Asset Condition Monitoring (ACM), Asset Strategy Management (ASM), Defect Elimination (DE), and Enterprise Asset Management (EAM). As a leader in asset management for 60+ years, Bently Nevada is the trusted partner of industrial operators on their digital transformation journey.

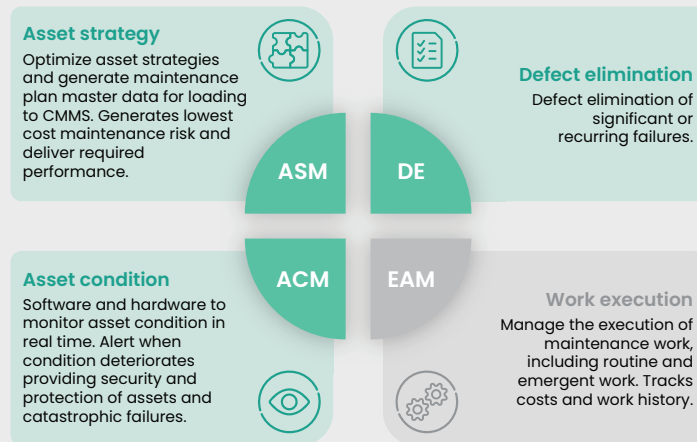
"Bently Nevada is one of the Condition Monitoring firms that can rightly claim they invented the whole concept of Asset Management in the first place."

— Control Magazine



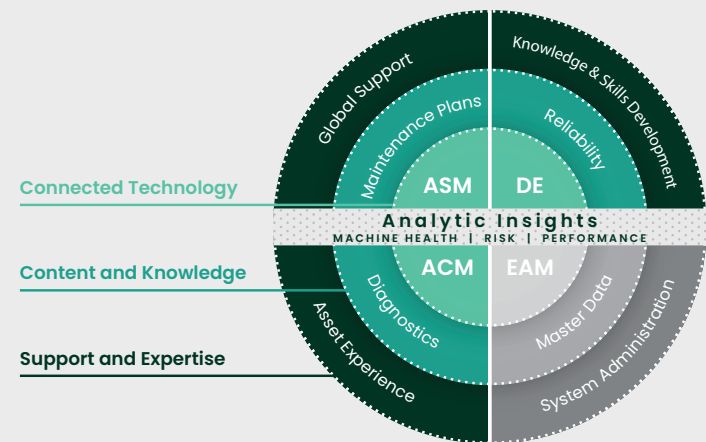
Current functional silos

Too often, the vast amounts of data generated by industrial operations end up in silos, isolated from critical enterprise-wide context.



Connecting the silos

System 1 Integrated APM connects, collects, and synthesizes information from disparate systems to deliver a consolidated, real-time understanding of your operational state.



Asset performance drives business performance

True asset health & risk visualization

Integrated APM provides a complete view of asset health and risk, accounting for asset age, operating condition, maintenance plans, and maintenance compliance. The insight gained provide a sound foundation for data-driven performance management, helping organization prioritize activities to manage cost and risk.

Predictable performance

Creating a seamless connection between asset condition, strategy, and execution supports the management of unplanned costs, the mitigation of risk, and avoidance of catastrophic failure. It can also support the lowest cost maintenance plans for each asset.

Continuous improvement

With ASM and ACM processes connected and established, any operating context or asset changes can be reflected in asset strategies and monitoring applications in real-time, creating a dynamic and agile approach to equipment maintenance and reliability, in sync with operational goals. Connection to the EAM application and work management process drives changes through to work execution in the field.

Increased productivity

Integrated APM helps organizations to maximize and sustain relation of efficiencies and productivity increases through intelligent, real-time, and risk-based reliability management.

Your partner in delivering peace of mind

Bently Nevada is proud to be part of Baker Hughes, a global leader and innovator with a century's worth of experience revolutionizing the way energy is produced. Our combined organizations leverage global reach and R&D investments, and Bently Nevada is integral to Baker Hughes' industrial

asset management strategy that combines our machine health, protection, analytics technologies, and service expertise with asset inspection and emissions management solutions.

WANT TO LEARN MORE?

bently.com

Baker Hughes