



Application note

Steam Flow measurement with Insertion Vortex Meter in a Paper Mill

Benefits:

- Cost effective and accurate for large pipes.
- Wide rangeability, 1 to 70 ton/hour steam mass flow rate
- Single tap point for flow/temperature/pressure
- Easy mechanical installation
- No downtime and no periodic maintenance/calibration
- Installation and post order support by local team in UAE

Summary

One of the largest paper mills in the Gulf countries (producing 325,000 tons annually, or 65 billion A4 sheets equivalent per year) was experiencing issues with existing flowmeters on its boiler's steam line and wanted to explore alternative solutions.

Application

Pipe size and material	: 8" Sch 40, Carbon Steel
Steam flow range	: 1 – 70 ton/hr
Steam temperature	: 100 – 191°C (212 – 376°F)
Steam pressure	: 1 – 12 bara (14.5 – 174 psia)

An existing Vortex flowmeter, which was providing inaccurate measurements, had to be replaced. The customer did not have an accurate picture of the actual steam flow measurement in the boiler system and did not know the reason for the malfunction. Following a site survey by Panametrics' Channel Partner, it was concluded that the existing meter did not record temperature and pressure measurements and the meter vendor did not provide adequate technical support to resolve the flow measurement problem.

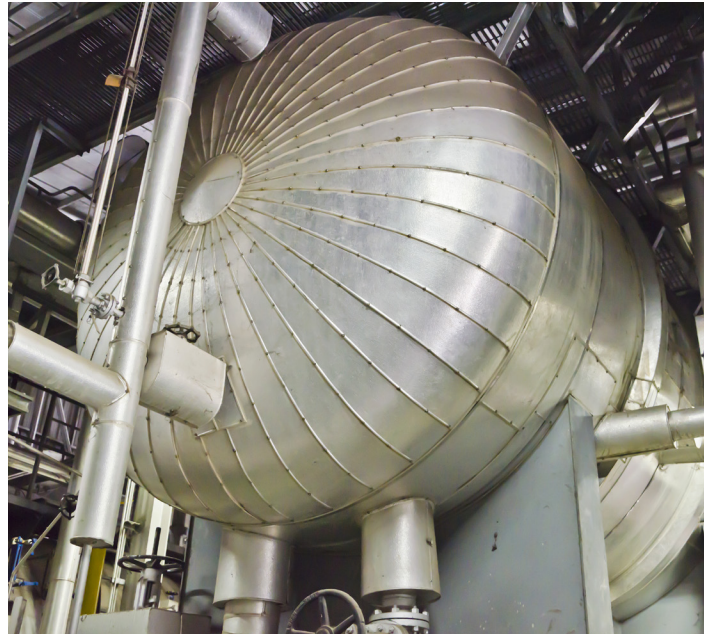
Panametrics' Channel Partner collected the application details together with the process data. Based on these and the sizing results, the team was able to propose a suitable solution

Challenges

Panametrics' MV82 VTP™ insertion type multivariable vortex flowmeter with pressure and temperature sensors was proposed due to the density range and fluctuation in pressure and temperature. 2" insertion nozzles were recommended to fit the meter in the steam line.

Panametrics' flowmeter technology was implemented seamlessly, with the customer experiencing no down-time.

Pleased with the solution, the customer is now able to accurately monitor its steam consumption in real time and better assess its boiler efficiency. It has asked Panametrics' to replace a further four vortex flowmeters at its site.



Panametrics, a Baker Hughes business, provides solutions in the toughest applications and environments for moisture, oxygen, liquid and gas flow measurement.

Experts in flare management, Panametrics technology also reduces flare emissions and optimizes performance.

With a reach that extends across the globe, Panametrics' critical measurement solutions and flare emissions management are enabling customers to drive efficiency and achieve carbon reduction targets across critical industries including: Oil & Gas; Energy; Healthcare; Water and Wastewater; Chemical Processing; Food & Beverage and many others.

Join the conversation and follow us on LinkedIn
[linkedin.com/company/panametricscompany](https://www.linkedin.com/company/panametricscompany)