

## Druck's Test & Calibration range

Druck's Test & Calibration range has been developed to embody 45 years' experience and to utilise the most advanced technology to deliver the highest quality results.

### Pressure calibrators



#### DPI610E & DPI610E-IS

Highly accurate and easy to use pressure calibrator with integrated pressure generation capabilities.



#### DPI611

Compact handheld pressure calibrator with integral pump up to 20 bar / 300 psi / 2 MPa.

### Multifunction calibrators



#### DPI620G & DPI620G-IS

Field calibrator and communicator for pressure, electrical, temperature and frequency with the ability to expand as needs change.

### Loop calibrators



#### DPI800 Series

Ultra-compact, simple to use range of tools for testing and calibrating, multiple process parameters with plug and play remote sensors.

## PACE Pressure controllers and indicators



#### PACE Tallis

A digital transfer standard calibrator, delivering unrivalled accuracy. Designed for test bench, bench top and panel mount calibration, test and monitoring applications.



#### PACE 1000

High precision pressure indicator for testing, monitoring and calibration.



#### PACE 5000

Single channel modular pressure controller delivering high speed, high precision control with a range of test options.



#### PACE 6000

Dual channel modular pressure controller delivering high speed, high precision control with a range of test options.

## Pressure indicators & gauges



#### DPI705E & DPI705E-IS

High accuracy pressure and temperature indicator with plug and play remote sensors.



#### DPI104 & DPI104-IS

Digital pressure gauge combining precision and functionality in a compact, robust and simple-to-use package.

## Pressure generation bases (for use with DPI620G)



#### PV624 Portable hybrid pressure controller

Hybrid base that combines the advantages of manual pressure generation with fully automatic pressure generation and control.



#### PV62X & PV62X-IS Pressure generation bases

Self-contained pneumatic or hydraulic pressure generation station, part of the Genii Advanced Modular Calibration System.

## Calibration management software



### 4Sight2 Calibration Software

Our customised software solution to improve process efficiency and an effective calibration solution that can reduce defects.

## Temperature calibrators



### DryTC165 & DryTC650

Incorporating the latest metal block and electronic control technology to offer a choice of precision bored well inserts to accommodate a wide range of test devices.

### Premium Temperature Calibrators

Offering six units, high accuracy, high speed temperature calibrators, covering a range from -55°C to 700°C. Including four multifunction units (PTC165, 165i, 255 & 255i) and two include integrated measuring instrument (PTC165i/255i).

## Calibration accessories



### PM620 & PM620-IS

Our portable and fully interchangeable pressure modules with screw in connection (no set up or tools required).



### PM620T & PM620T-IS

Incorporating our unique range of TERPS resonant silicon pressure sensor technology. Providing up to four times greater stability and higher accuracy.



### PM620LP

Ultra low pressure module for calibration and measurement from 2.5 mbar diff to 25 mbar differential.



### Pressure hand pumps

A variety of lightweight, rugged and durable hand pumps offering efficient pressure generation for a wide range of applications.

## Air Data Test Sets (ADTS)



### ADTS 542F

A small, lightweight and cost-effective portable two-channel flightline air data test set for 'Aircraft on the Ramp' testing.



### ADTS 55X Series

Our range of high accuracy and reliable Air Data Test Sets for a solution to any aircraft application.



### ADTS 405 MkII

Highest performance Air Data Test Set system with military and civilian applications.



### DPI610E-Aero

A low cost yet flexible portable calibrator for precision leak testing of aircraft pitot static systems.

## Druck Services



### Calibration

Ensures that your instruments' specifications are maintained by suitable reference standards.



### Repair

We know our instruments and can identify issues during calibration, limiting delays in repairs by third-party calibration houses.



### Preventative maintenance

Replaces wear parts at a time that suits you and avoids unplanned downtime in future.



### Upgrades

Provides access to enhancements and new functionality that increases the performance of your Druck instrument.

# Druck pressure sensors range

We have a wide range of platforms that can be configured to meet the individual needs of your business, whether that be in Industrial or Aerospace applications. Our platforms are designed to be used directly or as the basis of a customised solution.

## Analogue output pressure sensors



### UNIK5000

Configurable General Purpose Analogue sensor  
A unique solution to your pressure measurement needs built to order on short lead-times.  
Common configurations available from stock  
For use in multiple industrial applications.



### UNIK5600 & 5700

5600 316L Marine Certified Sensor  
5700 Titanium Marine Certified Sensor.



### UNIK5800 & 5900

Flame and explosion proof pressure sensing platforms. Ideal as a lightweight, cost effective sensor for the process and oil & gas industry.



### ADROIT6200

High performance, robust digitally compensated pressure measurement device with analogue outputs: Performance to 0.02%, Pressure range 200 mbar to 350 bar, Total accuracy to 0.1%.

## Specialised pressure sensors



### UNIK5900 SIL

Flame and explosion proof pressure sensor with SIL certification. Ideal for specialised applications in the oil & gas industry.



### Motorsport sensor series

On-race motorsport vehicle pressure sensors. Also used in UAVs and Automotive Testing applications. Including the Professional, Premium and Pinnacle sensor ranges.



### 1800 Series

17.5 and 25 mm packages  
Applications:  
Reliable measurement of liquid level.



### PTX 661 Hammer/Wing Union Transmitter

5kpsi, 6kpsi, 10kpsi, 15kpsi  
WECO 1502/2202 connections  
Field repairable (replaceable transmitter) for Oil and Gas topside applications.

## Digital output pressure sensors

### RPS/DPS 8000 Series



### RPS/DPS 8000, 8100, 8200, 8300

The DPS 8000 Series has a fully isolated sensing element for harsh environments and pressure ranges to 200 bar (2900 psi).  
With ultra high accuracy up to 0.01% FS, the RPS/DPS 8000 Series is ideal for applications from power generation to barometers and test.

### DPS5000 Family



### DPS5000 I²C

High accuracy 0.1% FS  
Low Power  
Applications:  
Embedded sensor for OEM's and remote monitoring on gas and water pipelines.



### DPS5000 SDI-12

High accuracy 0.1% FS  
Low Power  
Applications:  
Remote monitoring of water resources for system integrators.



### DPS5000 CANBus

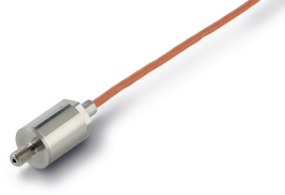
High accuracy 0.1% FS  
Fast response  
Applications:  
Automotive and Aerospace test  
Industrial control.

## Aerospace pressure sensors



### NG3000 Series

A cost effective, engineered solution, qualified to the latest RTCA DO-160G/MIL 810 levels. The NG3000 can be ordered through an online configurator tool, for commercial and military applications.



### PDCR300

General use for Aerospace Test  
Pressure range: 0 to 35MPa absolute  
All Stainless Steel 316L, 17/4PH  
& INC 625.



### 3000 Series

Amplified Aerospace Pressure Transducers  
High accuracy and stability  
Wide operating temperature range.



### 3700 Series

Absolute, gauge and sealed gauge options available  
Standard accuracy of  $\pm 0.2\%$  FS.  
Accurate pressure measurements for use in aerospace ground and flight tests.

## Subsea pressure sensors



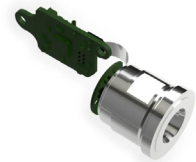
### PTX300 Subsea Pressure Transmitter

Better than 0.1% accuracy  
High reliability and excellent long-term stability  
External/ambient pressure up to 300 bar  
All Electron Beam welded construction.



### PTX400 Subsea Wellhead Pressure/ Temperature Transmitters

Better than 0.05% accuracy  
High reliability and excellent long term stability  
Standard pressure ranges up to 690 bar,  
temperature measurement  $-40^{\circ}\text{C}$  to  $165^{\circ}\text{C}$   
External pressure to 3,000 mH<sub>2</sub>O.



### DPS40P

A bespoke pressure sensor qualified for chemical injection applications on subsea trees and manifolds.

## Hydrogen pressure sensors



### UNIK5000H

Configurable hydrogen pressure sensor. Pressure ranges from 700 mbar to 700 bar.  
Ideal for test, networks and filling station applications.



### RPS/DPS8000H

Using TERPS technology to offer unrivalled accuracy and stability from 2 bar to 104 bar.  
Ideal for harsh environment solutions including gas turbines or fuel test.

## Modules & OEM



### Modules

12.5 to 25 mm packages  
Applications:  
Process pressure transmitter manufacturers, mass flow controllers.



### OEM

Druck's engineering team are available to customise our pressure modules and sensors to meet your requirements.

[Druck.com/Contact](https://druck.com/Contact)

[DruckContact@BakerHughes.com](mailto:DruckContact@BakerHughes.com)

**Baker Hughes** 

Copyright 2024 Baker Hughes Company. All rights reserved.

BHCS39407

(10/2024)

[Druck.com](https://druck.com)