

Cordant™

Baker Hughes 

How to maximize the value of your EAM upgrade

Enterprise Asset Management + Cordant™
Asset Performance Management delivers
a clear strategic advantage



Contents

- 03** Bridging the gap between asset strategy, health, and work management >
- 04** Value of integration >
- 06** 3 ways Cordant™ can help accelerate ROI >
- 08** Customer case study >
- 10** About Cordant™ >

Introduction

Bridging the gap between asset strategy, health, and work management

Asset-intensive industries face relentless pressure to enhance operational efficiency, maximize asset performance, and ensure sustainable practices. With many organizations having access to similar assets and talent pools, competitive differentiation stems not from what assets are owned but from how effectively they are managed.

Organizations have traditionally used two key types of systems to manage their assets: Enterprise Asset Management (EAM) and Asset Performance Management (APM). Each of these systems plays a pivotal yet distinct role in ensuring assets are effectively maintained to deliver the optimal balance of performance, cost and risk.

EAM systems support the efficient execution of maintenance activities and the management of associated asset data.

Its core functions support organizations in managing work orders, planning and scheduling routine and corrective maintenance tasks, managing spare parts inventory and materials procurement, and ensuring compliance. An EAM can also serve as a system of record for an organization's assets and the history of work performed on them.

For EAMs to be effective, the data and asset strategies within must be kept up to date, and the systems themselves must be updated regularly to take advantage of the latest features and advances in areas like analytics and AI. EAMs and work execution should also form part of a comprehensive approach to asset management. This is where Cordant™ Asset Performance Management comes into play.



Value of integration

Cordant™ Asset Performance Management combines health, strategy, and defect elimination capabilities into an integrated environment for a complete and quantified view of asset related risk and cost opportunity.

The solution helps organizations extract maximum value from their EAM systems and upgrades in a number of ways, starting with the consolidation and optimization of maintenance plan master data. The integration of Cordant™ Asset Performance Management and EAM systems also breaks down silos to connect strategy and execution.

A new or upgraded EAM will not improve asset reliability or performance on its own. Integration with Cordant™ Asset Performance Management unlocks the full potential of an EAM to enable improved reliability, reduced costs, and enhanced operational efficiency.



Siloed vs integrated asset management

Challenges in siloed environments	Benefits of Cordant™ + EAM Integration
Fragmented data & lack of holistic visibility	Enterprise-wide visibility of asset health, risk, strategy, and work execution
Ineffective or suboptimal maintenance strategies	Dynamic strategy management to ensure strategies are continually optimized to reflect asset condition and operational requirements
Workflow friction, inefficiency, & ineffective use of resources	Streamlined planning & scheduling; reduced manual effort; Right-sized maintenance
Elevated operational risks & compliance burdens	Proactive risk mitigation based on integrated data and predictive insights; Timely response to alerts; Improved safety & environmental outcomes; Simplified compliance reporting
Difficulty scaling improvements & best practices	Rapid deployment of strategy updates across the enterprise; Consistent application of Root Cause Analysis (RCA) findings; Enterprise-wide continuous improvement

3 ways Cordant™ can help accelerate ROI from your EAM investment

The justification to switch or upgrade an EAM is typically based on a greater return to the organization in terms of anticipated improvements in asset performance and/or a reduction in costs. However, an upgrade is unlikely to deliver an improvement in asset performance, especially if the upgrade involves simply taking current maintenance plans and migrating them into the new system.

The maintenance plans an organization executes are the single biggest influence on asset performance. So, to extract the maximum value from an EAM upgrade, don't just download, translate, and upload the existing maintenance plan master data into the new system.

Now is the opportune time to improve the quality, accuracy, and consistency of master data.

The Cordant™ Asset Strategy application of our Cordant™ Asset Performance Management solution and our portfolio of services supports this process of data improvement and the optimization of maintenance plans. We can also help you to accelerate and sustain value from your EAM investment.

How Cordant™ Asset Strategy helps



01

Digital strategy development and optimization

Cordant™ Asset Strategy enables the development of financially optimized reliability strategies using a centralized, connected, and complete data set. Your existing data, cleansed, consolidated, structured, and supplemented by our component strategy library, enables informed and accurate modelling of maintenance scenarios that deliver optimal performance.

Our rule-based generation of master data also drives high quality, more complete master data with consistent data structures to provide a clear path from maintenance plans to reliability analysis. Our master data also supports benchmarking performance across different assets, systems, and sites.



02

Rapid strategy deployment

Cordant™ Asset Strategy makes deployment of your reliability strategies easy. Cordant™ Asset Strategy generates EAM system compliant master data ready for direct electronic implementation. You can group maintenance tasks, using your business rules, for effective planning, scheduling, and execution.

We appreciate changing intervention or shutdown intervals, or adjusting frequencies based on operational requirements, can generate a large volume of master data updates. With Cordant™ Asset Strategy, these updates can be assessed and then implemented in minutes.



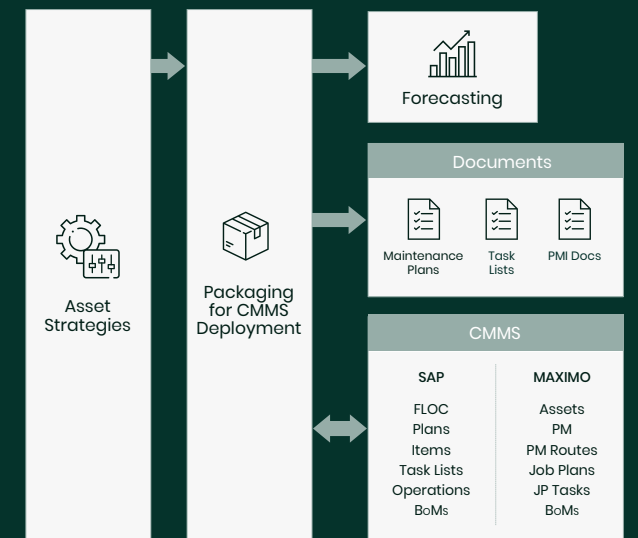
03

Continuous dynamic strategy management

Cordant™ Asset Strategy helps you connect strategies to operational context to deliver asset performance and quickly respond to changes. Cordant™ Asset Strategy also ensures that any change of reliability strategy, and related content, follows the appropriate reliability first principles assessment, review, and approval.

With Cordant™ Asset Strategy, a line of site is always maintained between the tasks being executed in the field and the reliability decision making process, failures modes addressed, and justification of the task. The consistency of data also enables global benchmarking of performance and supports trigger-driven review in the areas where most value can be extracted, or risk reduced.

Cordant™ Asset Strategy makes deployment of your asset strategies easy. Group maintenance tasks, using your business rules, for effective planning, scheduling, and execution. Cordant™ Asset Strategy generates EAM system compliant master data ready for direct electronic implementation.

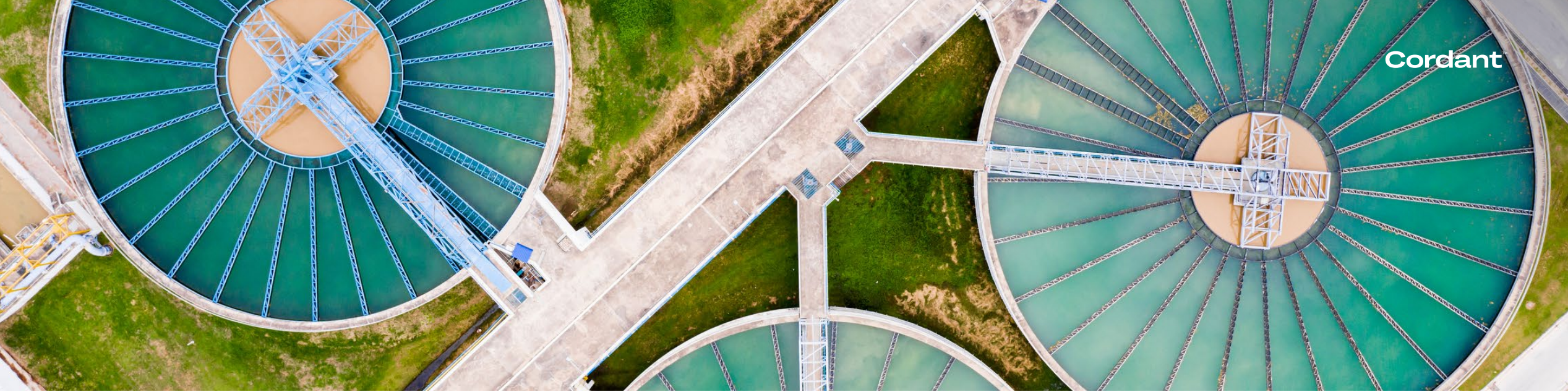


Case study:

Icon Water rapidly develops and deploys asset strategies as part of EAM upgrade

Icon Water supplies essential water and sewerage services to the Australian Capital Territory (ACT). As a regulated utility, it has a responsibility to ensure effective asset management and provide the right balance of cost and performance for ratepayers.

To meet these obligations and adopt a leading practice approach in line with the ISO 55000 standard, Icon Water made the decision to transition to a new Oracle EAM system and revolutionize their entire approach to asset management. The step change involved developing new asset strategies for 700,000 assets and loading them into Icon Water's Oracle Works Asset Management System (WAM).



How Cordant™ helped

To complete all new asset strategies on time, Icon Water engaged our services and what is now Cordant™ Asset Strategy. Icon Water had less than six months to build 40% of the strategies to be loaded into its WAM. To meet this timeframe, our experts worked alongside Icon Water's planners to develop strategies and ensure the most efficient approach for developing work orders.

Augmenting their existing strategy data with our component strategy library, we partnered with them to quickly develop strategies based on information like asset type, duty, process, criticality and environment, and then optimize these in line with Icon Water's reliability goals and operating environment. Once strategies were complete, we worked with Icon Water to set up rules for work packaging. By applying these rules to the asset strategies, Icon Water was able to automatically package work orders and then review and refine. This avoided a huge amount of manual effort and ultimately allowed Icon Water to meet its project timelines.

The results

- Asset Strategy failure modes and control actions were developed for all asset types in Icon Water in 14 weeks, 90% faster than spreadsheets (total of 700,000 assets)
- Efficient Master Data generation with 20,000 work orders or activities loaded to the WAM
- Strong accountability of asset strategies to drive reliability
- Technical and content foundation for continuous reliability and performance improvement
- All work orders “re-packed” to increase delivery crew efficiency
- Annual program of work published to improve stakeholder engagement
- Leading Practice approach meeting with ISO 55000

“We couldn't have finalized our strategies in time to meet with the aggressive timeline for the EAM implementation without working with ARMS Reliability (Now Baker Hughes) and using the OnePM (Now Cordant™ Asset Strategy) System. Also, now our strategies are designed in a way that if we identify one defect, we can knock out many and avoid future failures. This is helping us move from a reactive culture of Defect Elimination to a more proactive culture of Defect Prevention,”

said Andrew Behn, Maintenance Planning and Reliability Team Lead at Icon Water.

About Cordant™

Offered as a modular and composable solution, Cordant™ enables customers to address specific use cases such as health, strategy, defect elimination, process optimization, and sustainability performance and seamlessly expand capabilities as their needs evolve.

Cordant™ also connects applications and data from across assets and siloed data sources, providing a seamless view across asset, process, and sustainability operations, such that organizations can surface critical insights to:

Cordant™ includes a broad range of services that provide a path to success for every customer and help to sustain long-term value realization. Services include Master Data Development, Maintenance Strategy Development, and Integration Services to support the deployment or upgrade of your EAM.