

# SCOUT200 version 24.2 [Dec 2024]



Bently Nevada presents the v24.2 release of the SCOUT200 SI Collector App, delivering new and enhanced capabilities:

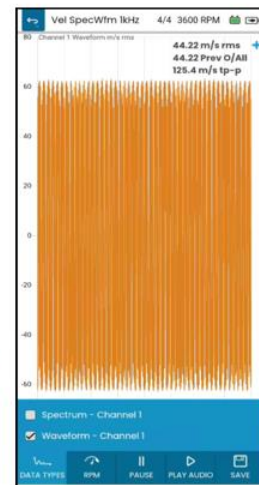
Bently Nevada remains focused on delivering the world's premier plantwide machinery management solutions through bi-annual product releases.

## SCOUT200 v24.2 Features

Light theme to improve readability in direct sunlight



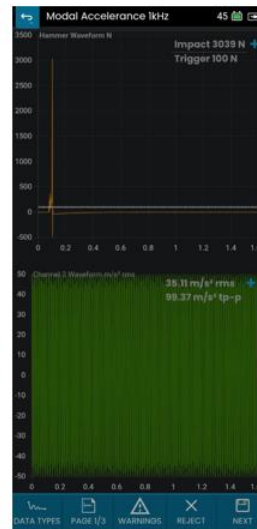
Vibration audio output from handheld



Optimize database backup restore process in SI Collector app



Support alarm checking on Keypad Entries in the SI Collector app



Modal Impact Testing - Ability to reject last impact from the results

Thank you,

Gaia Rossi, Product Line Manager

Sonu Jain, Technical Product Manager

On behalf of your SCOUT200 Leadership and Development Teams.

# 1. V24.2 CAPABILITY OVERVIEW

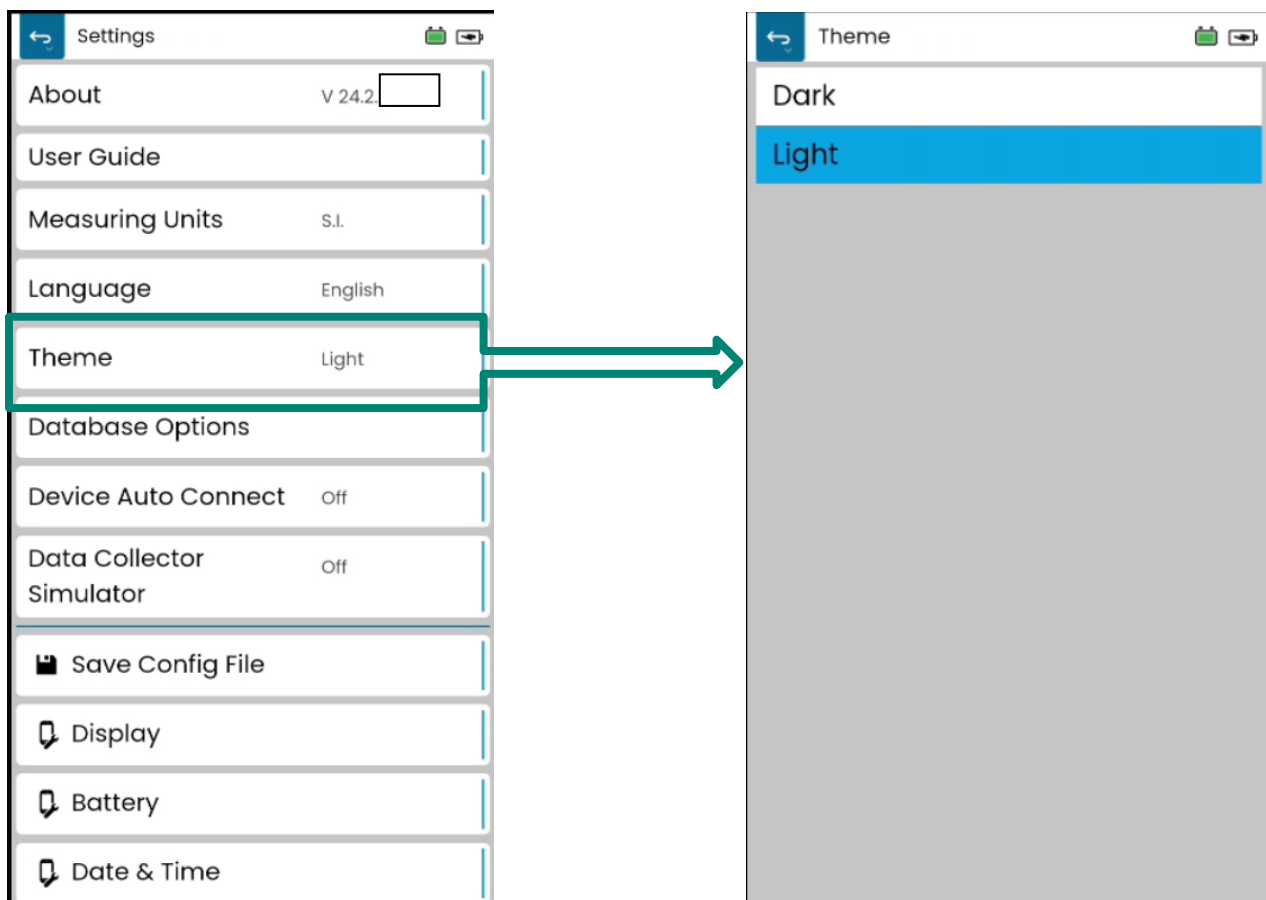
SCOUT200 v24.2 Capabilities		
Feature	Description	Section
Support Light theme to improve readability in direct sunlight	S1 Collector app enables users to select the theme from Dark and Light. Select Light theme to use in bright sunlight to get better readability.	2.1
Vibration audio output from handheld	S1 Collector app enables users to play and export waveform audio. S1 Collector app provides Play Audio button for Timebase plot when recording the data and single Waveform data type is selected.	2.2
Optimize database backup restore process in S1 Collector app	With S1 Collector app v24.2, default location for storing the backup database is now optimized and now when user uninstalls S1 Collector app, these backups will not be deleted.	2.3
Support alarm checking on Keypad Entries in the S1 Collector app	S1 Collector app v24.2 allows user to enable Keypad Alarms to check alarm level defined for a keypad entry in System 1 and if an alarm threshold is exceeded, the Gauge Display is shown to alert the user in the app.	2.4
Modal Impact Testing - Ability to reject last impact from the results	S1 Collector app v24.2 allows user to remove the last impact from the Modal Test results, by pressing on Reject button.	2.5

## 2. SCOUT200 FEATURES

### 2.1 Support Light theme to improve readability in direct sunlight

SI Collector app v24.2 enables users to select the theme from Dark and Light. Select Light theme to use in bright sunlight to get better readability.

With 24.2, Save Config File now also includes Theme settings. This file is loaded automatically when the app is launched, and therefore theme will be applied accordingly.

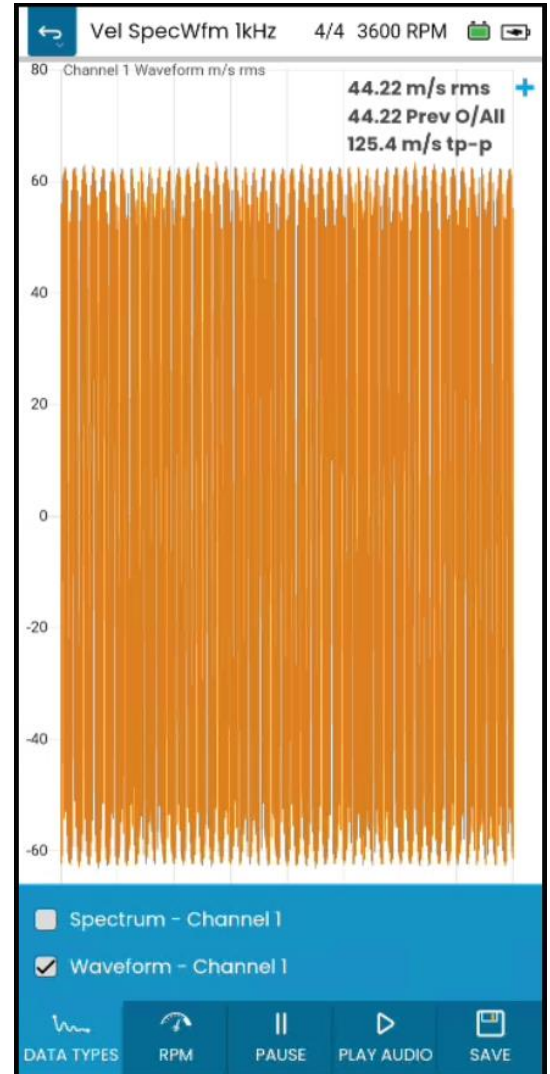
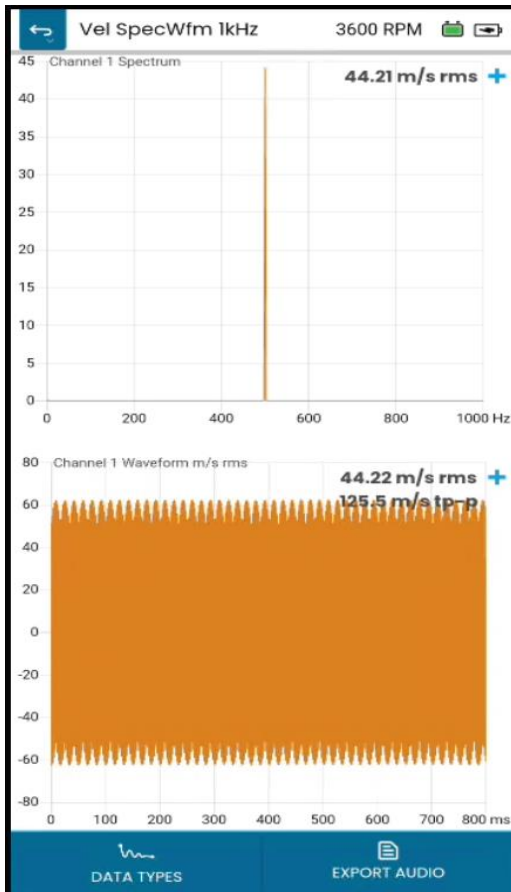


## 2.2 Vibration audio output from handheld

S1 Collector app v24.2 enables users to play and export waveform audio. S1 Collector app provides Play Audio button for Timebase plot when recording the data (in On-Route or Off-Route) and single Waveform data type is selected.

User can listen to vibration recording using handheld speaker, headphones via audio output jack or Bluetooth connection.

Export Audio button is available on Waveform Plot in Record Review. File format is ".wav" and saved at download /SCOUT200



## 2.3 Optimize database backup restore process in S1 Collector app

With S1 Collector app v24.2, default location for storing the backup database is now optimized and now when user uninstalls S1 Collector app, these backups will not be deleted.

S1 Collector app v24.2 allow users to save backup of database at following location:

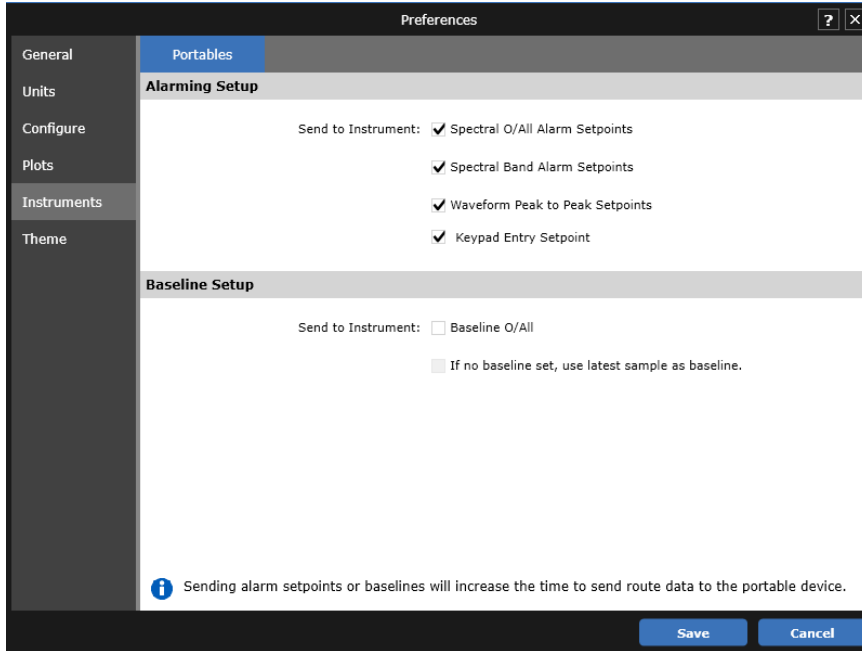
- a. Android - \Download\SCOUT200 Backup
- b. iOS/iPadOS – Browse location to save the backup. It is recommended to save the backup at location different than S1 Collector as when app is uninstalled then S1 Collector folder gets deleted.

S1 Collector app v24.2 allows users to restore database from following location:

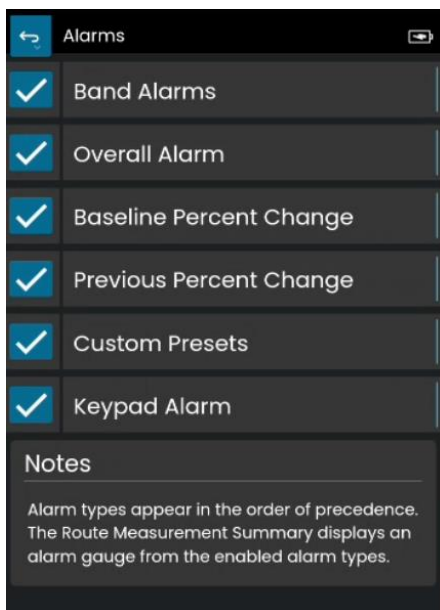
- a. Android - \Download\SCOUT200 Backup
- b. iOS/iPadOS – Browse the location where user saved the 24.2 and above databases backup

## 2.4 Support alarm checking on Keypad Entries in the S1 Collector app

System 1 v24.2 allows users to send Keypad Entry Setpoint to SCOUT200 instrument.



S1 Collector app v24.2 allows user to enable Keypad Alarms to check alarm level defined for a keypad entry in System 1 and if an alarm threshold is exceeded, the Gauge Display is shown to alert the user.

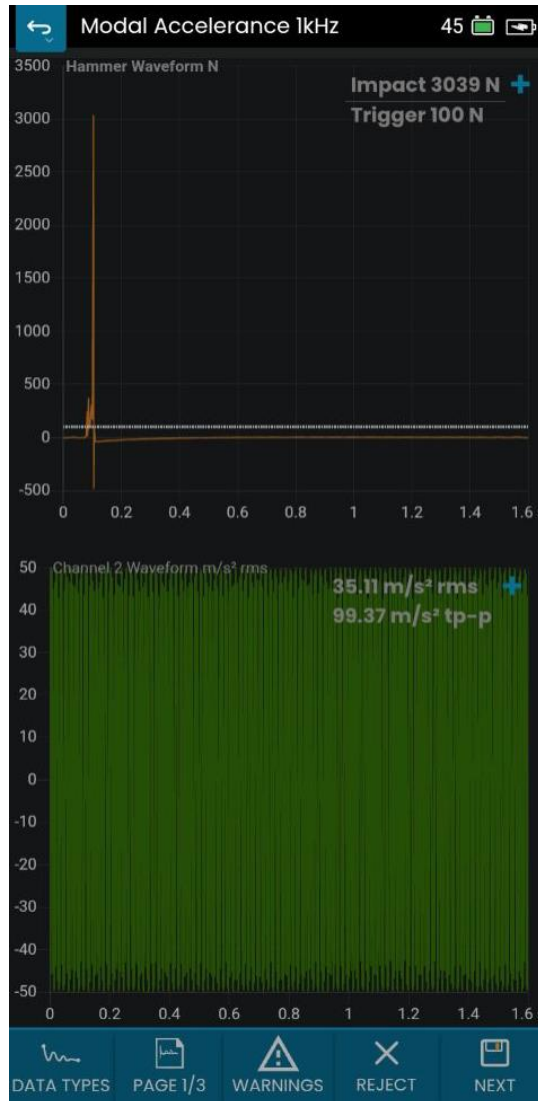


If multiple values are available for a keypad Entry point, then SI Collector app provide Analyze button to view a chart for the recording taken.



## 2.5 Modal Impact Testing – Ability to reject last impact from the results

SI Collector app v24.2 provides a Reject button on Modal Test page. When Reject button is pressed, last impact is removed from the Modal Test results and app shows the previous saved impact.





Copyright 2024 Baker Hughes Company. All rights reserved.



Bently Nevada, System 1, Trendmaster, ADAPT, vbSeries, RangerPro, ADRE, and Orbit Logo are registered trademarks of Bently Nevada, a Baker Hughes Business, in the United States and other countries. The Baker Hughes logo is a trademark of Baker Hughes Company. All other product and company names are trademarks of their respective holders. Use of the trademarks does not imply any affiliation with or endorsement by the respective holders.

Baker Hughes provides this information on an "as is" basis for general information purposes. Baker Hughes does not make any representation as to the accuracy or completeness of the information and makes no warranties of any kind, specific, Implied, or oral, to the fullest extent permissible by law, including those of merchant ability and fitness for a particular purpose or use. Baker Hughes here by disclaims any and all liability for any direct, indirect, consequential, or special damages, claims for lost profits, or third-party claims arising from the use of the information, whether a claim is asserted in contract, tort, or otherwise. Baker Hughes reserves the right to make changes in specifications and features shown herein, or discontinue the product described at any time without notice or obligation. Contact your Baker Hughes representative for the most current information.

The information in this document is the property of Baker Hughes and its affiliates and is subject to change without notice. It is being supplied as a service to our customers and may not be altered or its content repackaged without the express written consent of Baker Hughes. This product or associated products may be covered by one or more patents. See [Bentley.com/legal](https://www.bentley.com/legal).

1631 Bently Parkway South, Minden, Nevada USA 89423

Phone: 1.775.782.3611 or 1.800.227.5514 (US only)

[Bentley.com](https://www.bentley.com)