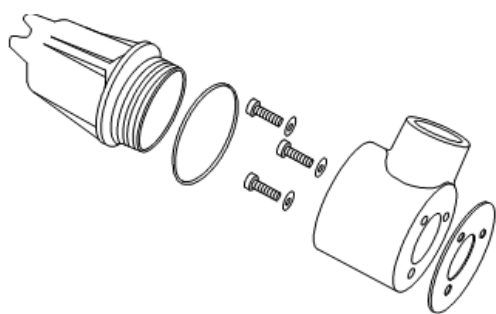


43217 and 37442 Accelerometer Mounting Kit

Datasheet

Cordant™

141630 Rev. H



Description

The Accelerometer Mounting Kit protects an accelerometer from adverse physical and environmental conditions. The mounting kit's rugged design is both water-tight and dust resistant.

The mounting kit is available in three configurations to house various accelerometers. All kits consist of a flat cover with a housing base, a set of three 1/4-in 20 UNC x 0.62 mounting screws with lock washers, a cable grip, an O-ring, and a gasket. One configuration adds an optional dome cover. Another configuration adds an optional extension and an optional dome cover. All kit designs mate with 12-mm (1/2-in) flexible or rigid conduit. Properly installed kits, using an accelerometer mounting base and rigid or flexible conduit, meet API 670 requirements. The conduit is ordered as an accessory. The mounting base is an accessory with the 23732, 330400 and 330425. Prior to mounting, the machine surface where the housing will be installed must be spot faced.

An optional 303 stainless steel accelerometer mounting kit for extra protection in corrosive environments is also available. It can be ordered under part number 164952-AA-BB.



Dimensions for the 303 stainless kit are not listed. Refer to drawing 164952.

Specifications

Materials

Flat Cover	"Copper free" aluminum
Dome Cover	"Copper free" aluminum
Extension	"Copper free" aluminum
Housing Base	Feraloy.
Gasket and O-ring	Neoprene
Outlet Port Size	1/2-in 14 NPT

Weight

With Flat Cover	320 g (11 oz)
With Dome Cover	600 g (21 oz)
With Dome Cover and Extension	737 g (26 oz)



For installation instructions, please refer to the Accelerometer Mounting Kit 43217 and 37442 User Guide (document 43231).

Ordering Information



For the detailed listing of country and product-specific approvals, refer to the [Approvals Quick Reference Guide \(108M1756\)](#).

For additional technical documentation, please log in to bntechsupport.com and access the Bently Nevada Media Library.

Order in increments of 1 foot.

Minimum Length: **01** = 1 ft

Maximum Length: **99** = 99 ft

Example: **12** = 12-foot assembly.

Accelerometer Mounting Kit

43217-AA

A: Option Description

00	Kit with flat cover for the 24147-01 Accelerometer
02	Kit with optional extension and both flat and dome covers for the 330400 and 330425 Accelerometers

High Temperature Accelerometer Mounting Kit

37442-AA

A: Option Description

00	Kit with flat cover for the 24147-01 Accelerometer
01	Kit with both flat and dome covers for the 23732-01 Accelerometers

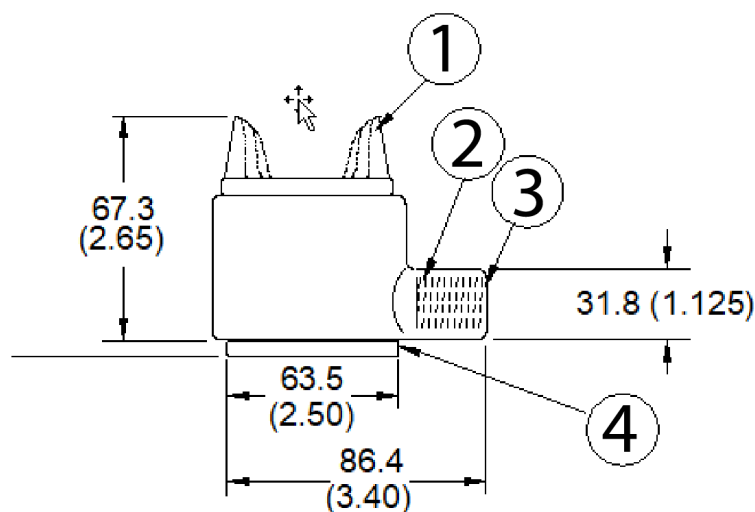
1/2-inch Sealtite Flexible Conduit

14847-AA

A: Option Description

	Assembly Length Option
--	------------------------

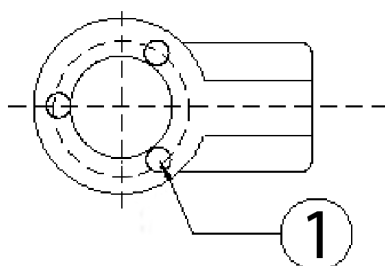
Graphs and Figures



1. Standard flat cover
2. 1/2-14 NPT
3. Cable grip
4. Gasket, 3.2 (0.12)

Figure 1: 43217-00 Accelerometer Mounting Kit Dimensions, Side View

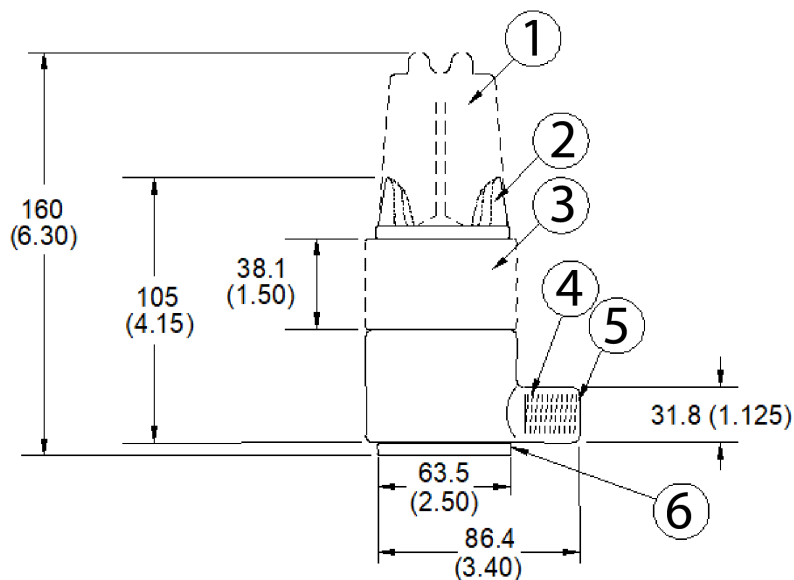
Dimensions are in millimeters (inches).



1. Holes 7.14 (0.28) diameter, 3 places equally spaced on a 39.6 (1.56) diameter, base circle 28.58 (1.125) diameter

Figure 2: 43217-00 Accelerometer Mounting Kit Dimensions, Bottom View

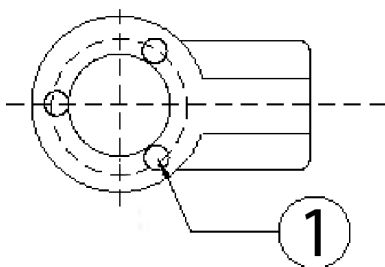
Dimensions are in millimeters (inches).



1. Optional dome cover
2. Standard flat cover
3. Optional extension
4. 1/2-14 NPT
5. Cable grip
6. Gasket, 3.2 (0.12)

Figure 3: 43217-02 Accelerometer Mounting Kit Dimensions, Side View

Dimensions are in millimetres (inches)



1. Holes 7.14 (0.28) diameter, 3 places equally spaced on a 39.6 (1.56) diameter, base circle 28.58 (1.125) diameter

Figure 4: 43217-02 Accelerometer Mounting Kit Dimensions, Bottom View

Dimensions are in millimeters (inches).

Copyright 2025 Baker Hughes Company. All rights reserved.

Bently Nevada, a Baker Hughes Company
1631 Bently Parkway South, Minden, Nevada USA 89423
<https://bntechsupport.com>