



# Thermoflex

spoolable composite pipe

# Available Products & Services



## Thermoflex Aramid Fiber Reinforced\*

Size	Operational Temperature (°F)	Nominal Pressure (psi)	Outside Diameter (in)	Inside Diameter (in)	Max. Length Per Reel (ft)	Min. Bend Radius (ft)	Reel Size (ft)	Max. Reel Weight (lb)
2.375"	150°F/180°F	500	2.35	1.90	6,600	3.9	10.3	5,720
		750	2.35	1.90	6,250	3.9	10.3	5,550
		1,500	2.35	1.90	6,000	3.9	10.3	5,920
3"	150°F/180°F	500	3.05	2.52	5,100	5.1	12.0	6,904
		750	3.05	2.52	5,400	5.1	12.0	7,270
		1,500	3.05	2.52	5,200	5.1	12.0	7,320
4"	150°F/180°F	275	4.04	3.36	2,900	6.7	12.0	6,390
		500	4.04	3.36	2,140	6.7	12.0	5,388
		750	4.04	3.36	2,850	6.7	12.0	6,730
		1,500	4.04	3.36	1,850	6.7	12.0	5,023
6"	150°F/180°F	275	6.06	5.03	900	10.1	14.5	6,290
		500	6.06	5.03	940	10.1	14.5	6,604
		750	6.06	5.03	600	10.1	14.5	5,300

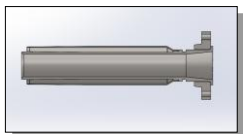
Reel weights can vary up to 20%

\*Available with HDPE, Nylon, and PPS liners. \*\* Two runs of pipe per reel, requiring additional splice per reel.

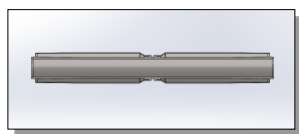
### FITTINGS

No welding required or makeup needed for flanges or threaded joints

- Coupling options include flanges, weld ends, and threaded ends - all can be made with standard or custom pipe sizes
- End fittings connect to common oilfield infrastructure
- Available in carbon steel, FBE coated, or stainless steel (316 or 2205 duplex)



FLANGED FITTING



SPLICE FITTING

### SERVICES

A range of services customized to your requirements:

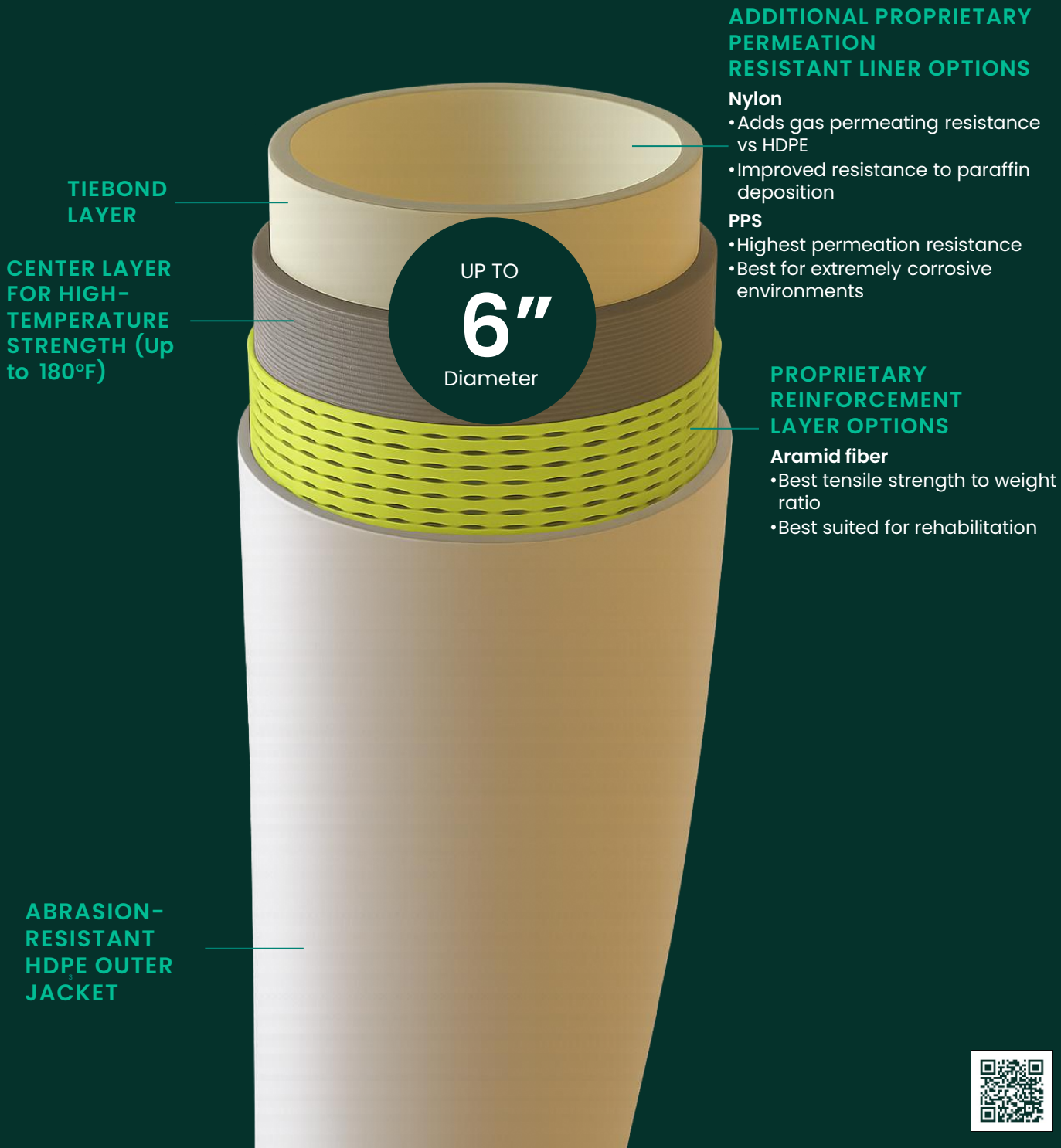
- Offloading and Loading Oversight
- Pipe Deployment and Assembly Services or Supervision
- Hydrotest Oversight
- Repairs and Post Installation Inspection Services
- Equipment Rental
- Manpower Certification

### TOTEX

Not sure if flexible pipelines fit your project? Our team can provide a free TOTEX study to demonstrate how early engagement and flexible solutions reduce installation costs, minimize maintenance, and accelerate deployment for better financial performance.

# Thermoflex

spoolable composite pipe



# Thermoflex spoolable composite pipe

## Our Value Proposition



### Corrosion & Chemical Resistance

Unmatched Resistance (co-extrusion)



### Early Production

Over 60% faster Installation and tie-in



### CAPEX

Up to 4X savings in installation cost to steel



### OPEX

Maintenance cost (cleaning and coating) reduced up to 80%



### Decarbonization

Reduce cradle to grave CO<sub>2</sub> impact by up to 75%

## Where we play

### Oil & Gas

Corrosive environments will always go hand in hand. As strong as steel, but with greater durability, Thermoflex will outlast and outperform conventional pipelines

### Water Transport

Produced, fresh-water transport or disposal present erosion and corrosion issues that steel pipes cannot address without extensive maintenance and treatment. Thermoflex offers a cost-competitive alternative

### Mining

Slurries transported in mining often face the same challenges as high pressures, temperatures, and corrosion/erosion of hydrocarbon transport. Low abrasion and no pressure derating of the pipe allows for high flow at optimal diameters

### New Energies

- ✓ CO<sub>2</sub> Transport
- ✓ Geothermal
- ✓ Hydrogen (H<sub>2</sub>)
- ✓ Other : Rehabilitation (Pull-Through old and aging assets)

Discover how Thermoflex spoolable composite pipe can reduce your capital and operations expenditures, reduce production downtime and improve your profits for the entire life cycle of the installation. Learn what to look for to determine which pipe configuration is right for your application

Request more information or connect with a Baker Hughes representative at:

[Bakerhughes.com/onshore-composite-pipe](https://www.bakerhughes.com/onshore-composite-pipe)

