

# Kantori delivers flawless execution of 12¼-in. section in China

## CHALLENGES

- Complex extended-reach drilling with tight operational margins
- Ineffective hole cleaning at the 13 3/8 -in. casing shoe due to pump capacity constraints
- Soft formations increasing risk of unintended wellbore deviation
- Planned remedial operations increasing risk of NPT and cost overruns

## SOLUTION

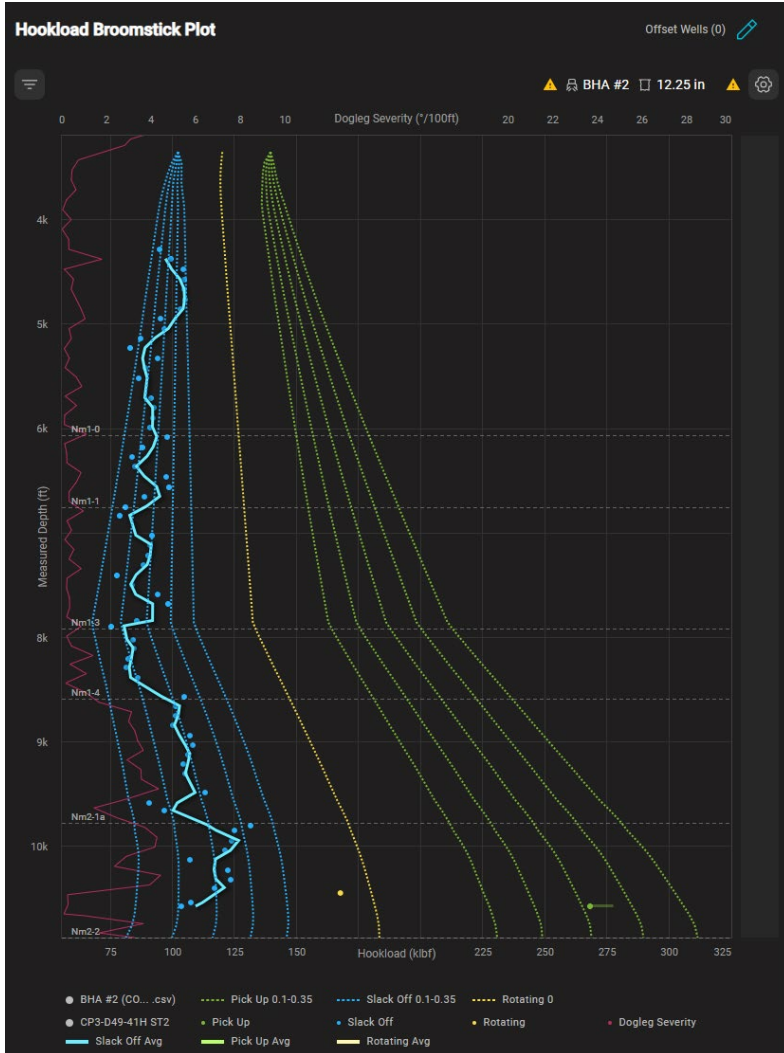
- Embedded Baker Hughes team delivering tailored, real-time optimization strategies with **Kantori™ intelligent well planning**
- Deployment of **Kantori™ drilling analytics, powered by Corva** to continuously monitor Hookload (trip/POOH), quantify friction, and enable real-time, data-driven decisions
- Proactively predict and validate well depth deviations, enabling corrective action before performance impact

## RESULTS

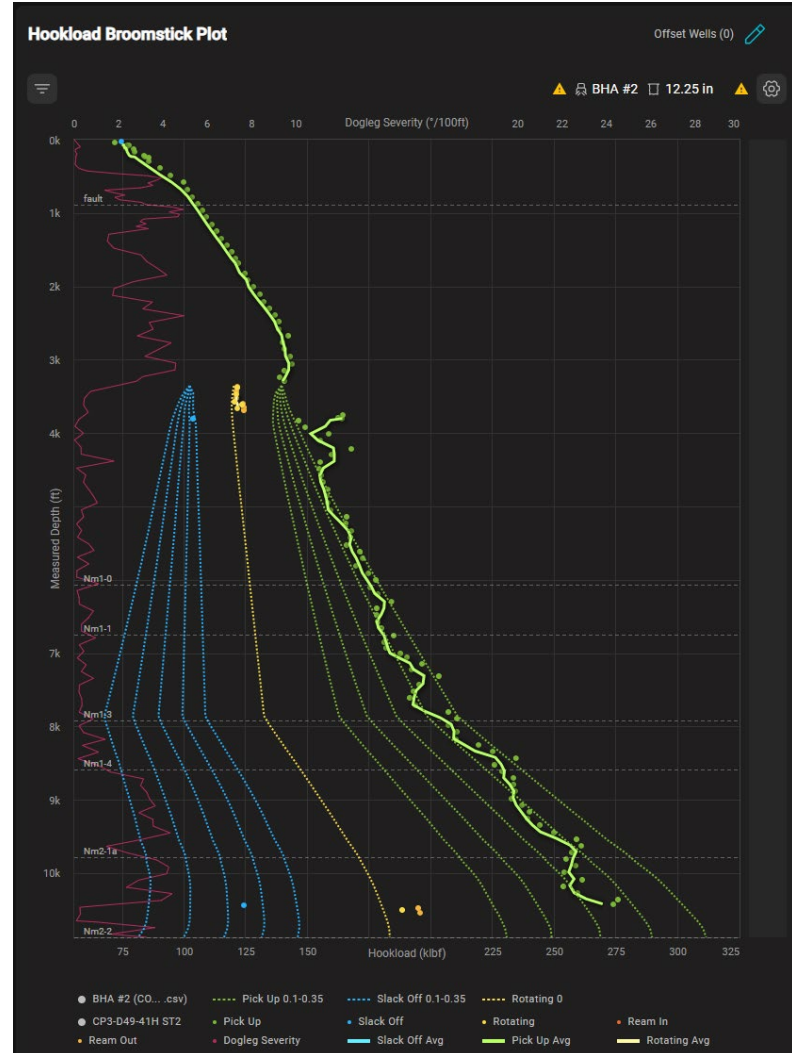
**3.5 days**  
of avoided NPT through proactive offset mitigation

**21 hours**  
saved versus AFE plan through optimized execution

**3,298 m**  
Achieved, a new local record for casing running depth



Short trip confirmed effective hole cleaning, validating high probability of successful subsequent trips



The final trip out of hole with minimal deviation at the casing shoe, confirming effectiveness of cleaning strategy