



Masoneilan™ Universal Flushing Trim Kit

Guard Your Valves Against
Potential Start-Up Damage

Masoneilan
a Baker Hughes business

Universal Flushing Trim Kit

Avoid Valve Damage During Start-Up and Avoid Unexpected Costs and Downtime

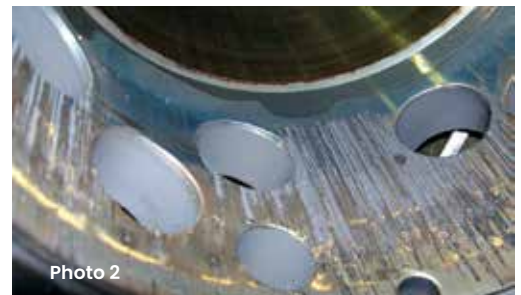
Protecting your valve investments is crucial throughout your equipment's life cycle - including the very beginning. Facility start-up can be a time of particular vulnerability for control valves. During the line clean-out process, construction debris, loose tools and other items can move through valve lines causing heavy damage to valve surfaces, trim, seat areas and flow paths. The result is often the exorbitant expense of a start-up delay and extremely costly trim or valve replacement, including rush shipment fees.

Masoneilan Universal Flushing Trim helps guard your valves against potential start-up damage. Available as an easy-to-install retrofit kit, it provides dependable protection from items left in the valve lines during construction.



Photo 1 shows weld rod jammed into the trim while photo 2 shows severe gouging of the trim.

Examples of Compromised Valve Trim due to Poor Flushing Techniques



Specially designed valve trim like the tortuous path V-LOG Stack (photo 1) or the Drilled Hole (photo 2) are critical in managing high pressure drops and noise. When debris left in the lines is flushed, the high performance trim can be jeopardized. This leads to costly and untimely trim replacement.

Safeguard your Valves and Protect your Bottom Line

Don't leave the crucial start-up phase of your valve's life cycle to chance and expose your project to the unexpected expense and downtime of construction debris damage. Include Masoneilan Universal Flushing Trim Kit in your valve installation plans and proactively ensure a smooth facility start-up process.

Easy Installation

Masoneilan Flushing Trim Kits are built for "quick change-over" installation making them easy to integrate into your start-up phase. Simply remove the OEM high performance trim assembly from the valve and install the universal flushing trim kit. After the clean-out process, easily replace the flushing trim with the original trim assembly.

Universal Flexibility

Capable of handling a range of materials, the universal fit of the Masoneilan Flushing Trim delivers exceptional flexibility for many different applications. This exceptional adaptability further simplifies installation and easy integration into your facility's process systems.

Universal Flushing Trim Kit

Design

The flushing kits will be designed around the following requirements.

Operating Conditions

- Max Pressure 21 bar (305psi)
- Temperature range of -20 to 400°F
- Media compatible with carbon steel WCC

Specifications

- ASME Boiler and Pressure Vessel Code Section VIII
- ASME B16.5 Pipe Flanges and Flange Fittings

Availability

The Universal Flushing Trim Kit is available in a variety of sizes for the following Masoneilan product lines:

- 21000 Series Control Valves
- 41005 Series Control Valves
- 78400/18400 **LincolnLog™** Anti-Cavitation Valves
- 49000 Series V-LOG Low Noise Anti-Cavitation Valves
- 84002 Series **SteamForm™** Steam Conditioning Valves
- 35002 Series **Camflex™** rotary control valves

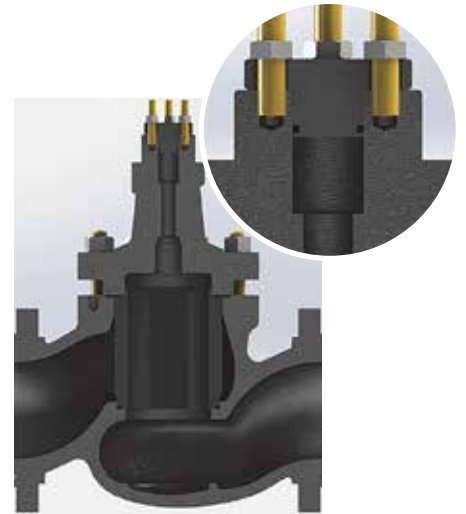
Types



Pass Through Kit



Controllable Flushing Kit



End Stop Kit

Universal Flushing Trim Kit

Options

Flushing Trim Kit options are available in a variety of types and sizes to suit Masoneilan product lines:

Temperature range: -29°C (-20.2°F) to 232°C (450°F) for standard product.

Size range for 41005 Series:

Pass Through Kit: 2 to 24 inches (DN50 to DN600)

Controllable Kit: 6 to 24 inches (DN50 to DN600)

End Stop Kit: 6 to 24 inches (DN50 to DN600)

Pressure Class: ANSI CL150 to ANSI CL1500 per ASME B16.34.

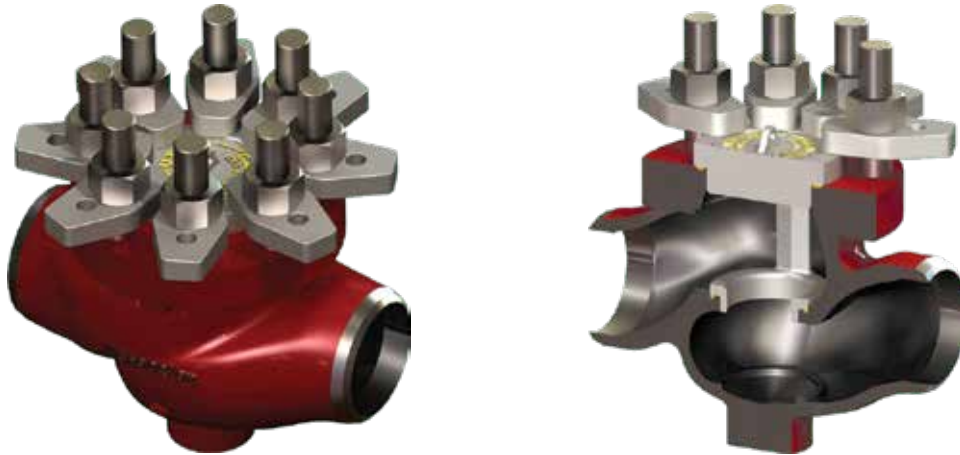
Standard Bonnet (Heat Extension and Cryogenic Bonnet and 41005 HC and GS are available upon request).

Flushing Kits can be used for other Masoneilan valves using common parts such as blind packing flanges. These valves include:

- 21000 Series
- 35002 Series Camflex
- 78400/18400 Series LincolnLog
- 84002 Series SteamForm

Flushing kits must also be purchased with a gasket replacement kit to be installed when reassembling the valve after the flushing process.

Flushing kits for other valve series, sizes and pressure classes are available upon request.



Temporary Bonnet Flushing Kit



Your local MARC™ (Masoneilan Authorized Repair Center) can assist in the installation and commissioning as required.

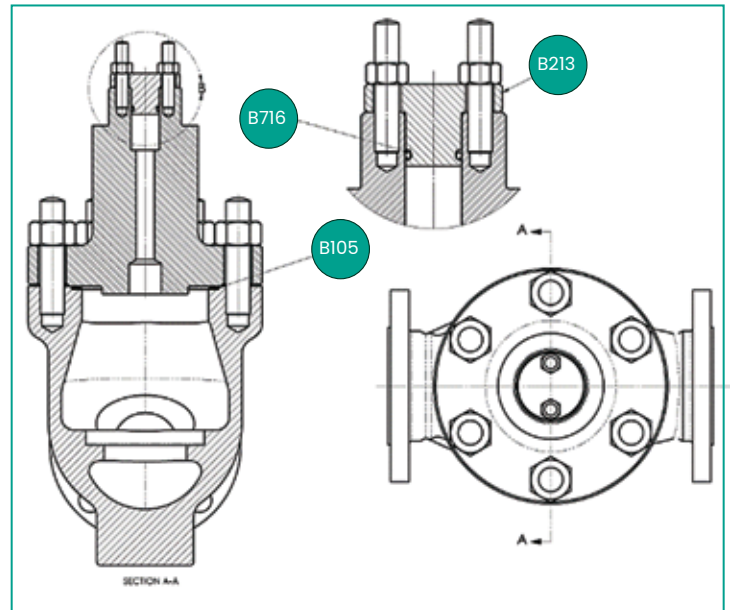
Find your nearest MARC center at:

<https://valves.bakerhughes.com/contact-us>

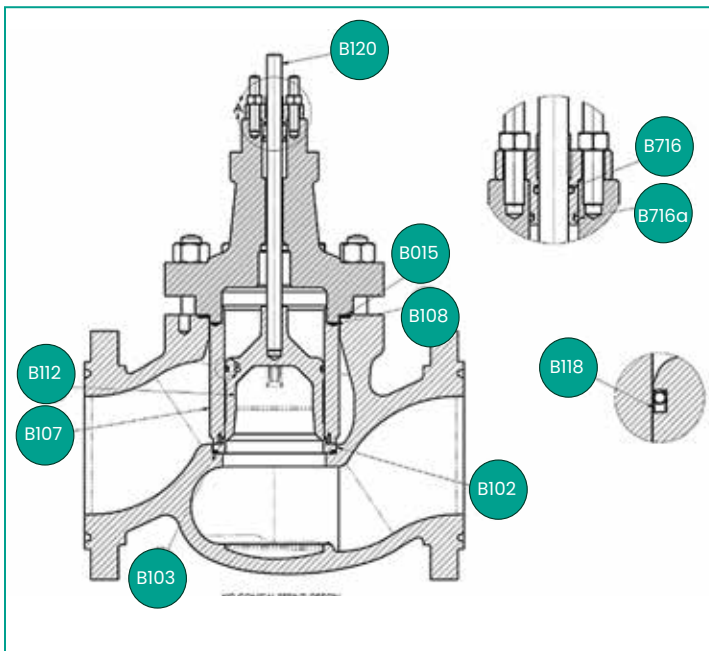
Universal Flushing Trim Kit

Parts Description

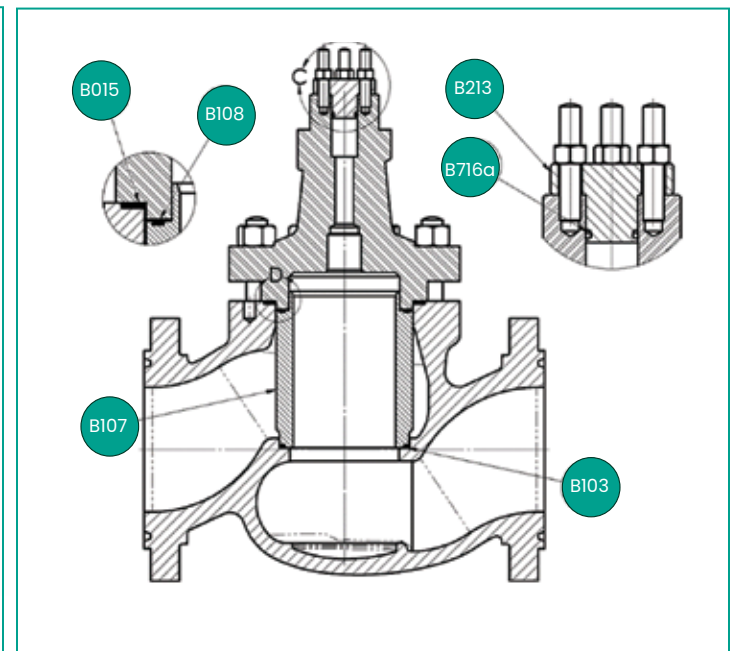
Ref. n°	Part Description
B015	Body Gasket
B102	Seat Ring
B103	Seat Ring Gasket
B107	Cage
B108	Cage Gasket
B112	Plug
B118	Balanced Seal
B120	Plug Stem
B213	Packing Flange
B716	Inner O-Ring
B716a	Outer O-Ring
B903	Plug Pin (not shown)



Pass Through Kit



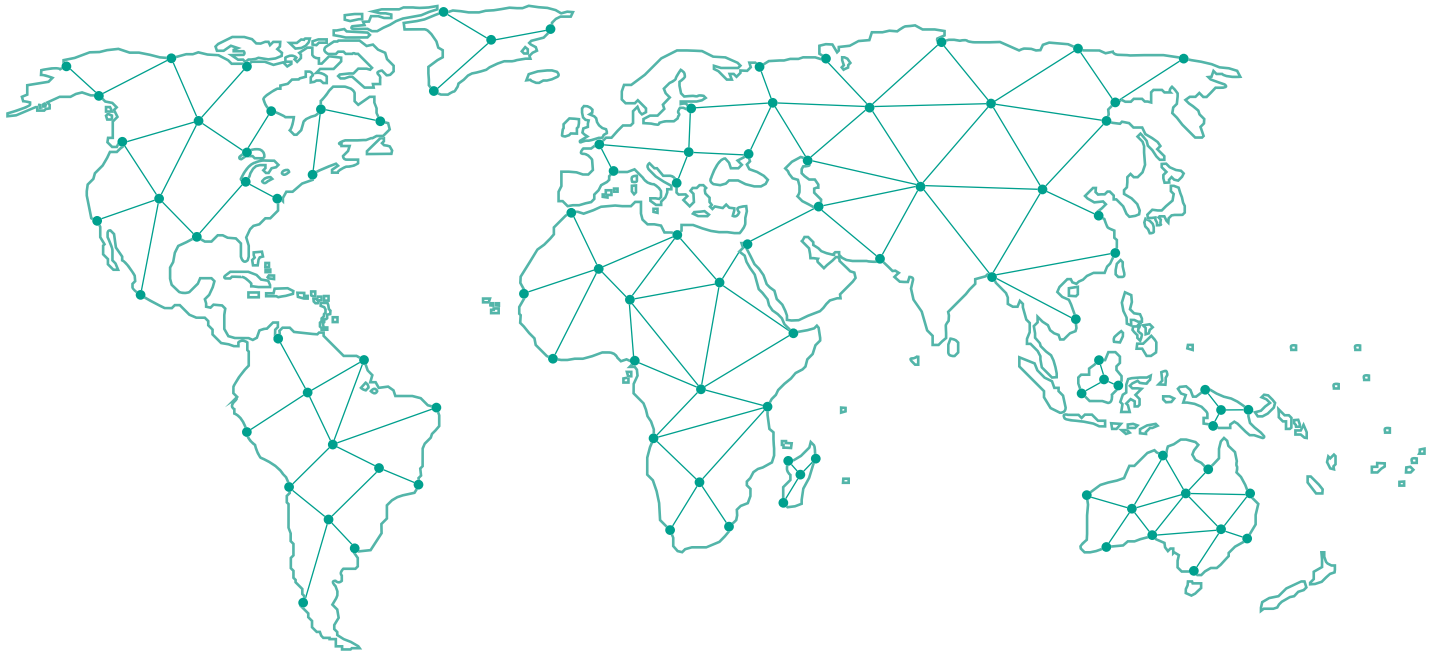
Controllable Flushing Kit



End Stop Kit with Bonnet

Find the nearest local Channel Partner in your area:

valves.bakerhughes.com/contact-us



Tech Field Support and Warranty:

Phone: +1-866-827-5378
valvesupport@bakerhughes.com

valves.bakerhughes.com

Baker Hughes 